

(CRIED1 .CRIED) 24193

CRIED ONE DEPARTURE

AL-5573 (FAA)

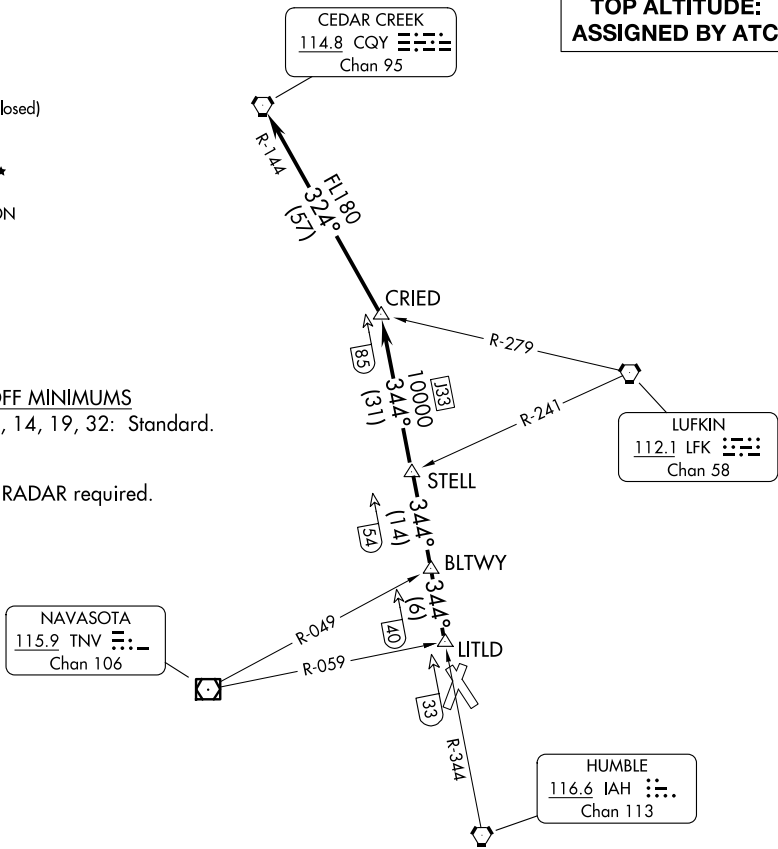
CONROE/NORTH HOUSTON RGNL (CXXO)
HOUSTON, TEXAS

ATIS
 118.325
 CLNC DEL
 120.45
 CLNC DEL
 119.55 (when twr closed)
 GND CON
 120.45
 CONROE TOWER ★
 124.125 (CTAF)
 HOUSTON DEP CON
 119.7 281.4

**TOP ALTITUDE:
ASSIGNED BY ATC**

TAKEOFF MINIMUMS
 Rwys 1, 14, 19, 32: Standard.

NOTE: RADAR required.



NOTE: Chart not to scale.

DEPARTURE ROUTE DESCRIPTION

TAKEOFF ALL RUNWAYS: When entering controlled airspace, climb on assigned heading for RADAR vectors to LITLD INT. Maintain ATC assigned altitude. Expect filed altitude 10 minutes after departure, thence

. . . . on IAH R-344 to STELL INT, then on IAH R-344 to CRIED INT, then left turn on CQY R-144 to CQY VORTAC.

CRIED ONE DEPARTURE

(CRIED1 .CRIED) 07OCT21

HOUSTON, TEXAS
CONROE/NORTH HOUSTON RGNL (CXXO)

SC-5, 15 MAY 2025 to 12 JUN 2025

SC-5, 15 MAY 2025 to 12 JUN 2025