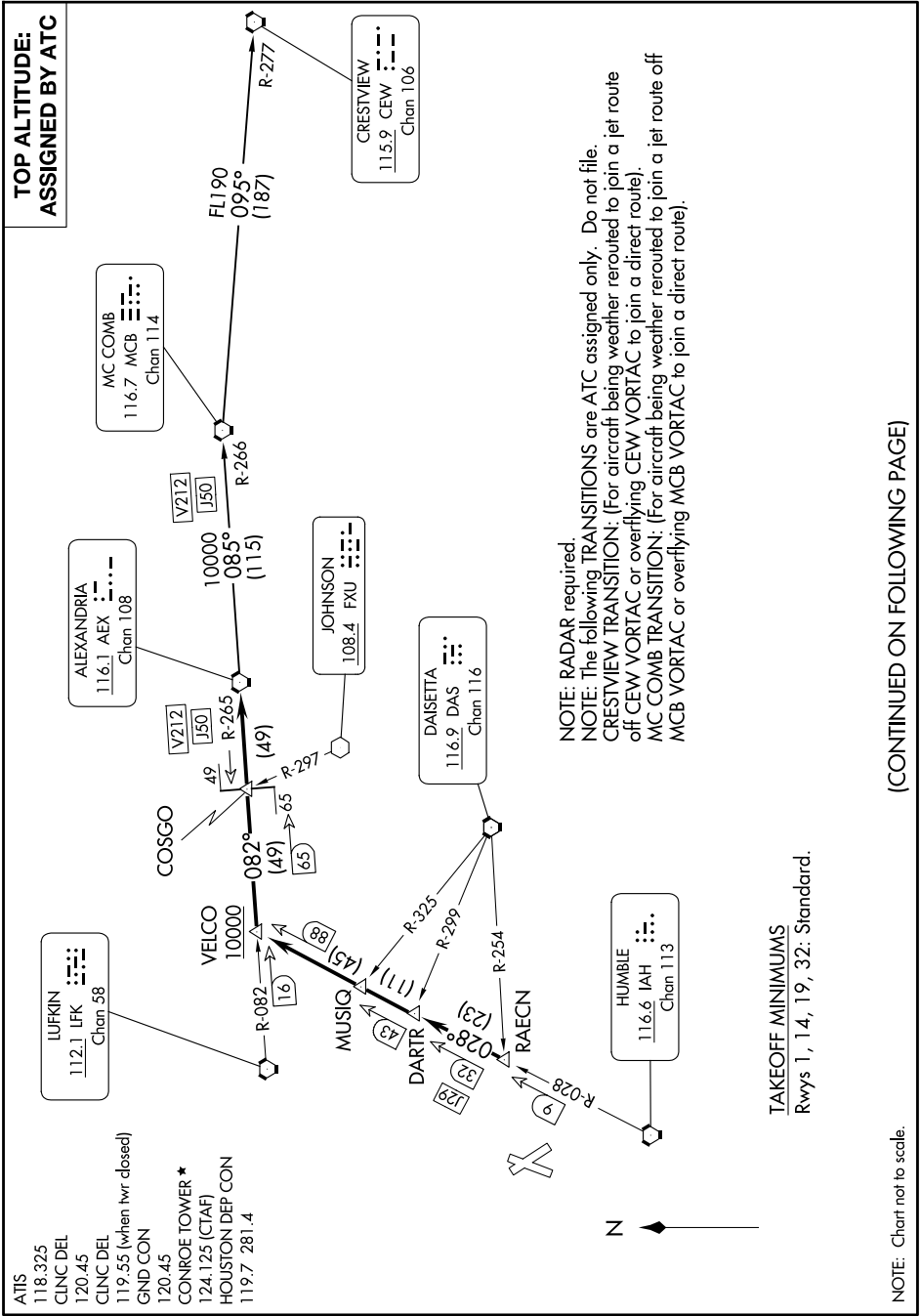


ALEXANDRIA THREE DEPARTURE

SC-5, 15 MAY 2025 to 12 JUN 2025



**TOP ALTITUDE:
ASSIGNED BY ATC**

ATIS 118.325
 CLNC DEL 120.45
 CLNC DEL 120.45
 CLNC DEL 119.55 (when hwr closed)
 GND CON 120.45
 CONROE TOWER * 124.125 (CTAF)
 HOUSTON DEP CON 119.7 281.4

NOTE: RADAR required
NOTE: The following TRANSITIONS are ATC assigned only. Do not file.
CRESTVIEW TRANSITION: (For aircraft being weather rerouted to join a jet route off CEW VORTAC or overflying CEW VORTAC to join a direct route).
MC COMB TRANSITION: (For aircraft being weather rerouted to join a jet route off MCB VORTAC or overflying MCB VORTAC to join a direct route).

TAKEOFF MINIMUMS
 Rwys 1, 14, 19, 32: Standard.

NOTE: Chart not to scale.

(CONTINUED ON FOLLOWING PAGE)

SC-5, 15 MAY 2025 to 12 JUN 2025

ALEXANDRIA THREE DEPARTURE