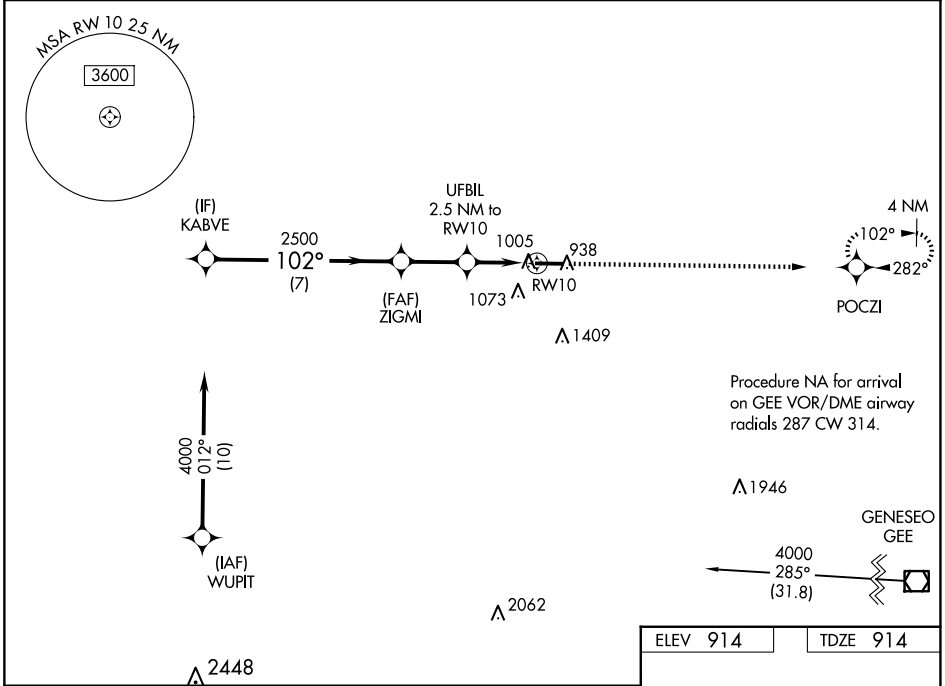


WAAS CH 82421 W10A	APP CRS 102°	Rwy Idg TDZE 914 Apt Elev 914	5499 914 914
--	------------------------	---	---

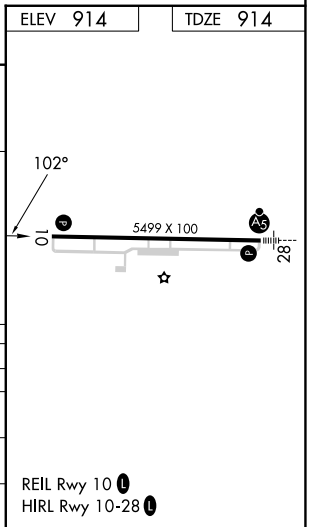
RNAV (GPS) RWY 10

GENESEE COUNTY (GVQ)

RNP APCH - GPS.			MISSED APPROACH: Climb to 3000 direct POCZI and hold.
For uncompensated Baro-VNAV systems, LNAV/VNAV NA below -16°C or above 54°C.			
AWOS-3PT 127.525	ROCHESTER APP CON 123.7 322.3	CLNC DEL 121.8	UNICOM 122.7 (CTAF) 0



KABVE		ZIGMI		UFBIL 2.5 NM to RWY 10		RWY 10	
4000		2500		1740		3000 POCZI	
GP 3.00° TCH 40		2500		1740		102°	
7 NM		2.4 NM		1.5 NM		1 NM	
CATEGORY	A	B	C	D			
LPV DA	1114- ³ / ₄		200 (200- ³ / ₄)				
LNAV/VNAV DA	1168- ³ / ₄		254 (300- ³ / ₄)				
LNAV MDA	1260-1		346 (400-1)				
CIRCLING	1380-1	466 (500-1)	1720-2 ¹ / ₄ 806 (900-2 ¹ / ₄)	1720-2 ¹ / ₂ 806 (900-2 ¹ / ₂)			



NE-2, 15 MAY 2025 to 12 JUN 2025

NE-2, 15 MAY 2025 to 12 JUN 2025