

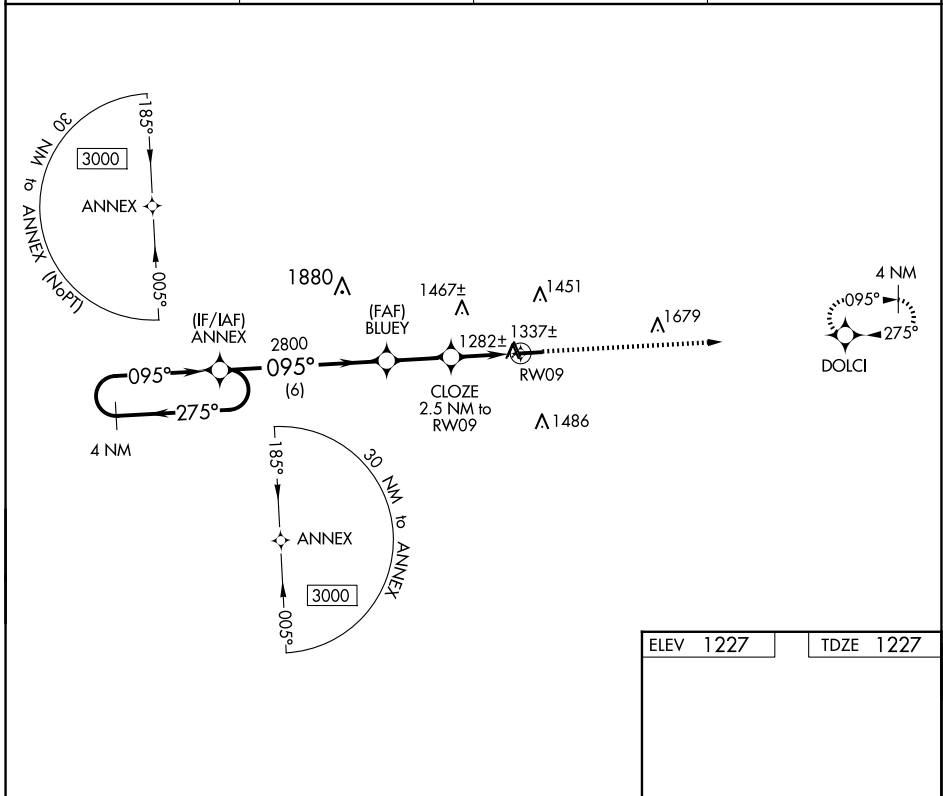
APP CRS	Rwy Idg	4400
095°	TDZE	1227
	Apt Elev	1227

RNAV (GPS) RWY 9

HOLMES COUNTY (10G)

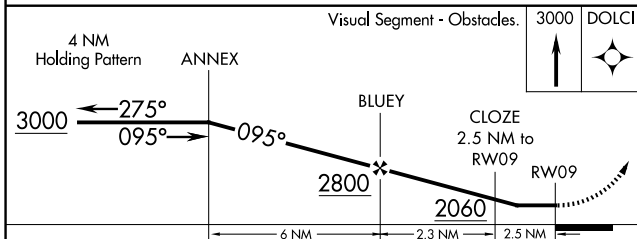
RNP APCH - GPS.	MISSED APPROACH: Climb to 3000 direct DOLCI and hold.
Rwy 9 helicopter visibility reduction below 3/4 SM NA. When local altimeter setting not received, use Wayne County altimeter setting: increase all MDA 60 feet and visibility LNAV and Circling Cats C and D 1/4 SM.	

AWOS-3 128.325	INDIANAPOLIS CENTER 124.45 323.275	UNICOM 123.0 (CTAF)	123.4 0
--------------------------	--	-------------------------------	----------------



EC-2, 15 MAY 2025 to 12 JUN 2025

EC-2, 15 MAY 2025 to 12 JUN 2025



ELEV 1227	TDZE 1227
-----------	-----------

Obstacle diagram showing RWY 27 with a 1.0% UP slope and a 4400 X 75 obstacle. The obstacle height is 1251±. The diagram also shows the 095° heading and the 27° heading.

CATEGORY	A	B	C	D
LNAV MDA	1620-1	393 (400-1)	1620-1 1/8	393 (400-1 1/8)
C CIRCLING	1760-1	533 (600-1)	1840-1 3/4 613 (700-1 3/4)	1860-2 633 (700-2)

MIRL Rwy 9-27 0
REIL Rwy 9 and 27 0