

KNIGHTS THREE DEPARTURE

CHARLOTTE DEP CON
128.325 307.8
AWOS-3
118.175
CLNC DEL
127.35
UNICOM (CTAF)
122.725

**TOP ALTITUDE:
3000**

RADAR and DME required.

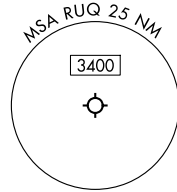
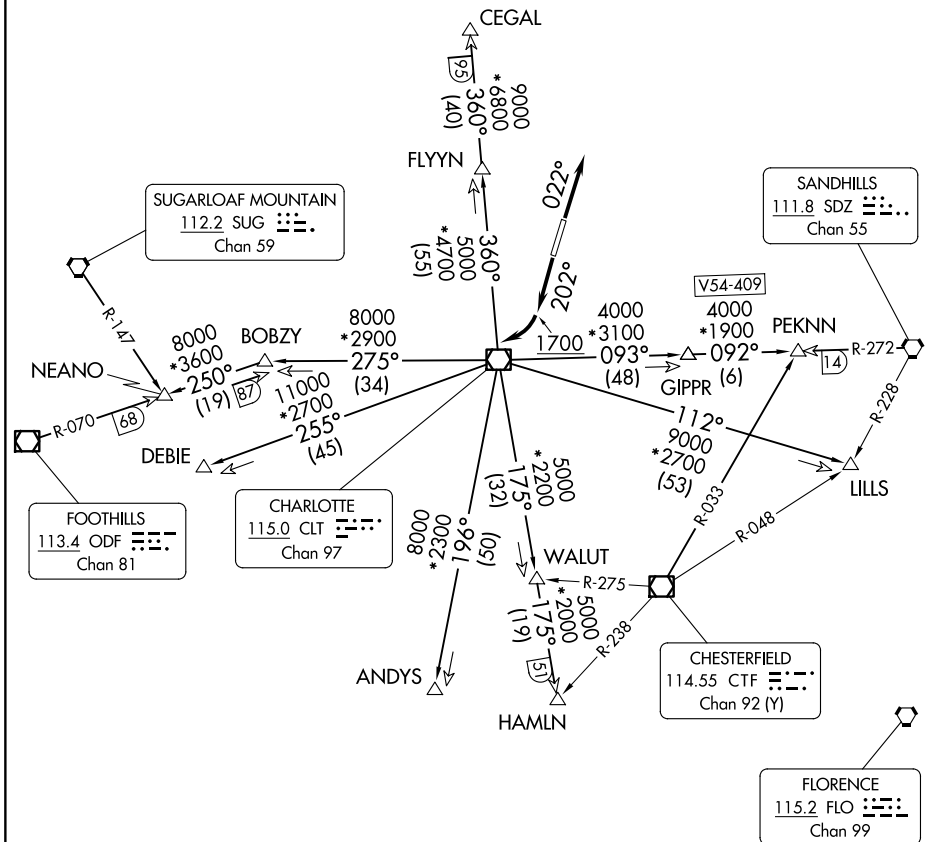
TAKEOFF MINIMUMS

Rwy 2: Standard.

Rwy 20: 400-2¾ or standard with minimum climb of 205' per NM to 1300, or alternatively, with standard takeoff minimums and a normal 200' per NM climb gradient, takeoff must occur no later than 1200' prior to DER.

SE-2, 15 MAY 2025 to 12 JUN 2025

SE-2, 15 MAY 2025 to 12 JUN 2025



NOTE: For propeller aircraft only.
 NOTE: Turboprops: Operate in a manner that will result in best forward speed and climb rate.
 NOTE: Transponder code will be issued via Charlotte clearance delivery.

(CONTINUED ON FOLLOWING PAGE)

NOTE: Chart not to scale.

KNIGHTS THREE DEPARTURE