

(ESTRR5.ESTRR) 24081

AL-5551 (FAA)

MID-CAROLINA RGNL (RUQ)
SALISBURY, NORTH CAROLINA

ESTRR FIVE DEPARTURE (RNAV)

TOP ALTITUDE:
3000

RNAV 1 - DME/DME/IRU or GPS.

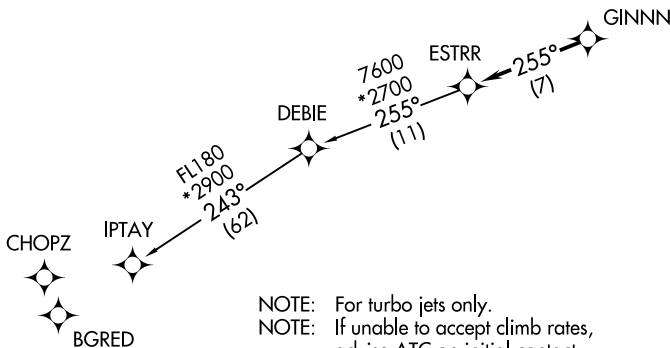
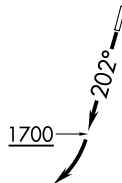
RADAR required.

CHARLOTTE DEP CON
128.325 307.8
AWOS-3
118.175
CLNC DEL
127.35
UNICOM (CTAF)
122.725

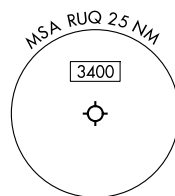
TAKEOFF MINIMUMS

Rwy 2: Standard.

Rwy 20: 400-2³/₄ or standard with minimum climb of 205' per NM to 1300, or alternatively, with standard takeoff minimums and a normal 200' per NM climb gradient, takeoff must occur no later than 1200' prior to DER.



- NOTE: For turbo jets only.
- NOTE: If unable to accept climb rates, advise ATC on initial contact.
- NOTE: Transponder code will be issued via PDC or Charlotte CLNC DEL.
- NOTE: Upon reaching 10000 MSL, accelerate to and maintain 280K, if unable advise ATC.



NOTE: Chart not to scale.

DEPARTURE ROUTE DESCRIPTION

TAKEOFF RUNWAY 2: Climb on heading assigned by ATC, thence. . . .

TAKEOFF RUNWAY 20: Climb on heading 202° to 1700 before turning right, then on heading assigned by ATC, thence. . . .

. . . .on RADAR vectors to GINNN, then on track 255° to ESTRR, then on IPTAY Transition. Maintain 3000, expect clearance to filed altitude within 10 minutes after departure.

IPTAY TRANSITION (ESTRR5.IPTAY)

ESTRR FIVE DEPARTURE (RNAV)

(ESTRR5.ESTRR) 21MAR24

SALISBURY, NORTH CAROLINA
MID-CAROLINA RGNL (RUQ)

SE-2, 15 MAY 2025 to 12 JUN 2025

SE-2, 15 MAY 2025 to 12 JUN 2025