

(BEAVY6.BEAVY) 24081

AL-5551 (FAA)

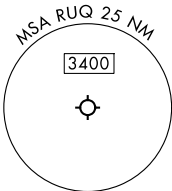
MID-CAROLINA RGNL (RUQ)
SALISBURY, NORTH CAROLINA

BEAVY SIX DEPARTURE (RNAV)

CHARLOTTE DEP CON
128.325 307.8
AWOS-3
118.175
CLNC DEL
127.35
UNICOM
122.725 (CTAF)

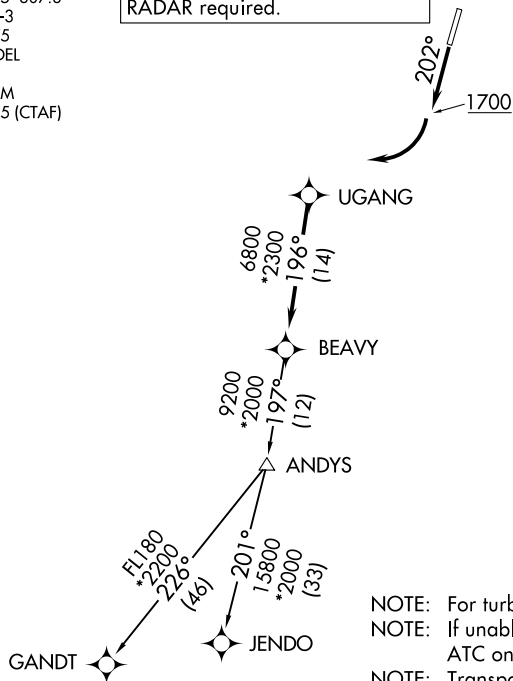
RNAV 1-DME/DME/IRU or GPS.
RADAR required.

**TOP ALTITUDE:
3000**



SE-2, 15 MAY 2025 to 12 JUN 2025

SE-2, 15 MAY 2025 to 12 JUN 2025



- NOTE: For turbo jets only.
- NOTE: If unable to accept climb rates, advise ATC on initial contact.
- NOTE: Transponder code will be issued via PDC or Charlotte CLNC DEL.
- NOTE: Upon reaching 10000 MSL, accelerate to and maintain 280K, if unable advise ATC.

TAKEOFF MINIMUMS

Rwy 2: Standard.

Rwy 20: 400-2 3/4 or standard with minimum climb of 205' per NM to 1300, or alternatively, with standard takeoff minimums and a normal 200' per NM climb gradient, takeoff must occur no later than 1200' prior to DER.

NOTE: Chart not to scale.

DEPARTURE ROUTE DESCRIPTION

TAKEOFF RUNWAY 2: Climb on heading assigned by ATC, thence...

TAKEOFF RUNWAY 20: Climb on heading 202° to 1700 then on heading assigned by ATC, thence...

...on RADAR vectors to UGANG, then on track 196° to BEAVY. Then on assigned transition. Maintain 3000, expect clearance to filed altitude within 10 minutes after departure.

GANDT TRANSITION (BEAVY6.GANDT)

JENDO TRANSITION (BEAVY6.JENDO)

BEAVY SIX DEPARTURE (RNAV)

(BEAVY6.BEAVY) 21MAR24

SALISBURY, NORTH CAROLINA
MID-CAROLINA RGNL (RUQ)