

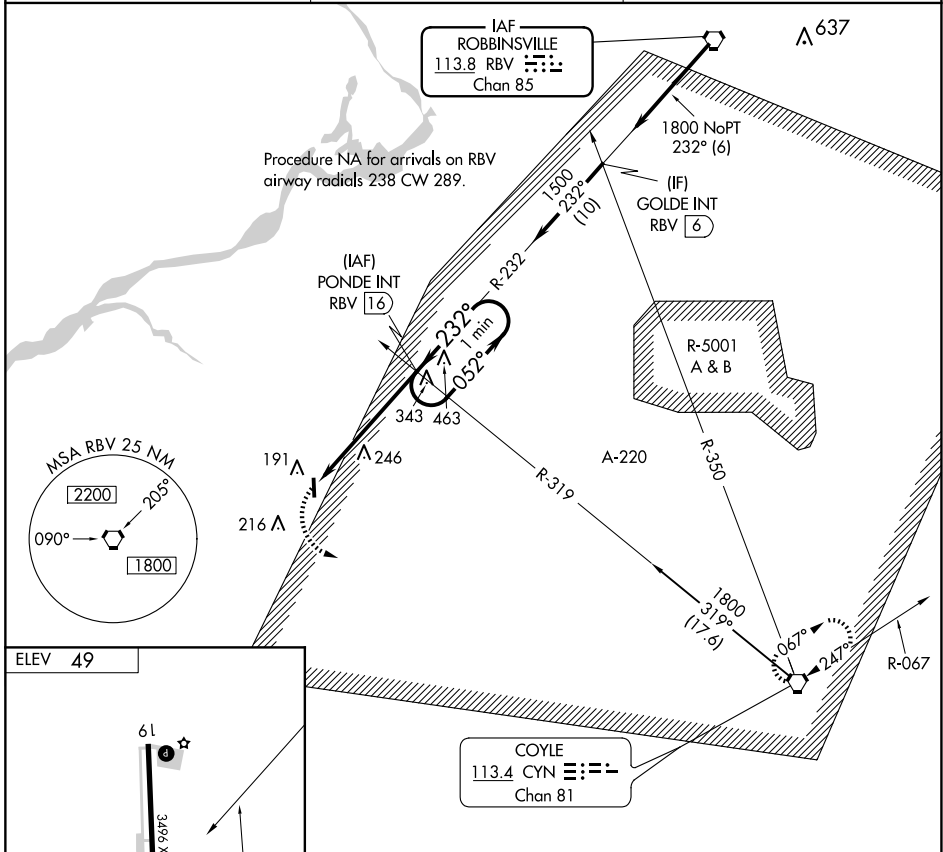
VORTAC RBV 113.8 Chan 85	APP CRS 232°	Rwy Idg TDZE Apt Elev	N/A N/A 49
---------------------------------------	------------------------	-----------------------------	---------------------------------------

VOR-A
FLYING W (N14)

⚠ Helicopter visibility reduction below 1 SM NA. Use Mount Holly altimeter setting, when not received use Northeast Philadelphia altimeter setting and increase all MDA 40 feet. Night Landing: Rwy 1 NA.

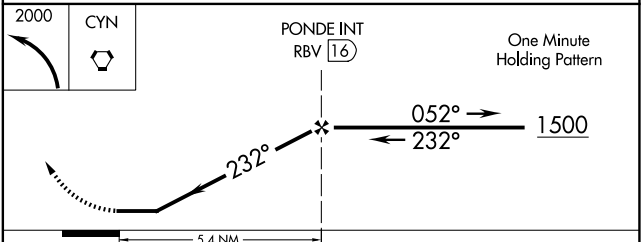
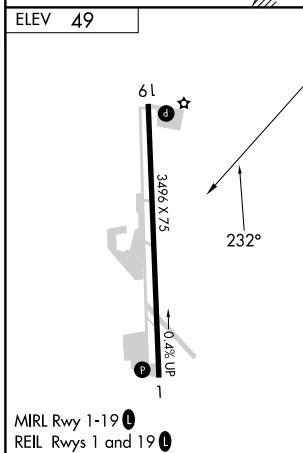
⚠ MISSED APPROACH: Climbing left turn to 2000 direct CYN VORTAC and hold.

VAY ASOS 119.325	MC GUIRE APP CON 126.475 363.8	UNICOM 122.8 (CTAF) ⓪
----------------------------	--	--



NE-2, 15 MAY 2025 to 12 JUN 2025

NE-2, 15 MAY 2025 to 12 JUN 2025



FAF to MAP 5.4 NM					
Knots	60	90	120	150	180
Min:Sec	5:24	3:36	2:42	2:10	1:48
CATEGORY	A	B	C	D	
CIRCLING	600-1 551 (600-1)	600-1½ 551 (600-1½)	NA		