

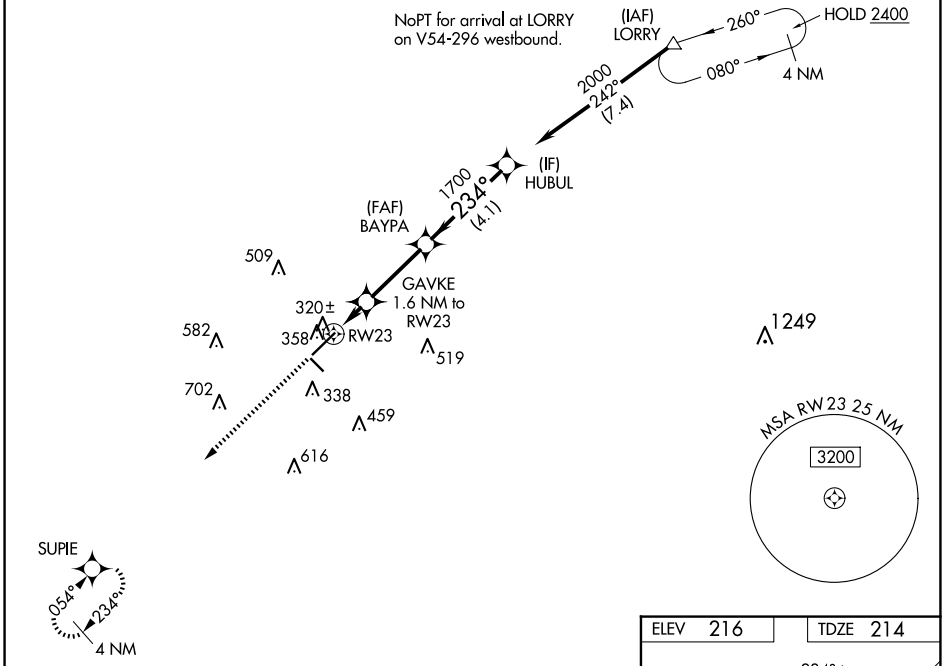
WAAS CH 61023 W23A	APP CRS 234°	Rwy Idg TDZE 214 Apt Elev 216	6316
--	------------------------	---	-------------

RNAV (GPS) RWY 23

LAURINBURG/MAXTON (MEB)

RNP APCH-GPS.		MISSED APPROACH: Climb to 2000 direct SUPIE and hold.	
<p>▼ Circling to Rwy 13 and 31 NA at night. Rwy 23 helicopter visibility reduction below 3/4 SM NA. For uncompensated Baro-VNAV systems, LNAV/VNAV NA below -11°C or above 54°C.</p>			

ASOS 134.125	FAYETTEVILLE APP CON 127.8 343.725	GCO 135.075	UNICOM 122.8 (CTAF) 0
------------------------	--	-----------------------	---------------------------------



SE-2, 15 MAY 2025 to 12 JUN 2025

SE-2, 15 MAY 2025 to 12 JUN 2025

2000	SUPIE				
CATEGORY	A	B	C	D	
LPV DA		483-7/8	269 (300-7/8)		
LNAV/VNAV DA		483-7/8	269 (300-7/8)		
LNAV MDA		580-1	366 (400-1)		
C CIRCLING	740-1	524 (600-1)	780-1 1/2 564 (600-1 1/2)	1020-2 1/2 804 (900-2 1/2)	

