

FORT BELVOIR, VIRGINIA

RNAV (GPS) RWY 14

APCH CRS	Rwy Idg	4930
142°	TDZE	60
	Arprt Elev	74

- (USA)

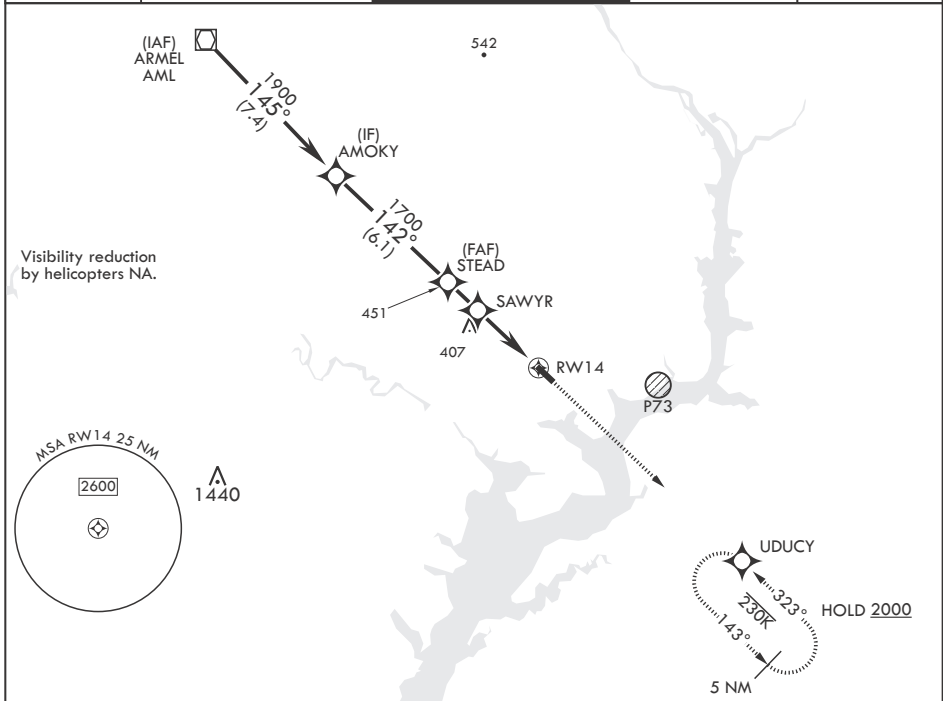
DAVISON AAF (KDAV)

RNP APCH - GPS

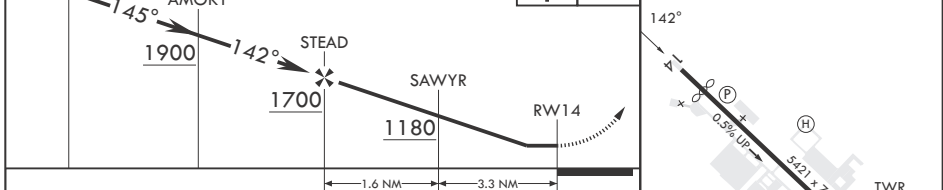
MISSED APPROACH: Climb to 2000 direct UDCY and hold.

▼ * If local altimeter setting not received, use Ronald Reagan Washington National altimeter setting.

ATIS 128.175	POTOMAC APP CON 118.95 319.1	TOWER * 124.275 (CTAF) 0 229.4	GND CON 121.9 351.8	CLNC DEL 351.8
-----------------	---------------------------------	-----------------------------------	------------------------	-------------------



VOR/DME	Visual Segments - Obstacles	2000 UDCY	ELEV 74	TDZE 60
---------	-----------------------------	-----------	---------	---------



CATEGORY	A	B	C	D
LNAV MDA	660-1	600 (600-1)	660-1¼ 600 (600-1¼)	660-2 600 (600-2)
CIRCLING	740-1	666 (700-1)	740-1¼ 666 (700-1¼)	760-2¼ 686 (700-2¼)
*RONALD REAGAN WASHINGTON NATIONAL ALTIMETER SETTING MINIMUMS				
LNAV MDA*	700-1	640 (700-1)	700-2	640 (700-2)
CIRCLING*	780-1	706 (800-1)	780-2 706 (800-2)	800-2¼ 726 (800-2¼)

FORT BELVOIR, VIRGINIA
Amdt 3 30NOV23

38°43'N - 77°11'W

DAVISON AAF (KDAV)

RNAV (GPS) RWY 14

NE-3, 15 MAY 2025 to 12 JUN 2025

NE-3, 15 MAY 2025 to 12 JUN 2025