

CLTCH THREE DEPARTURE (RNAV)

NE-3, 15 MAY 2025 to 12 JUN 2025

TOP ALTITUDE:
3000

P-568



P-56A



DEPARTURE ROUTE DESCRIPTION

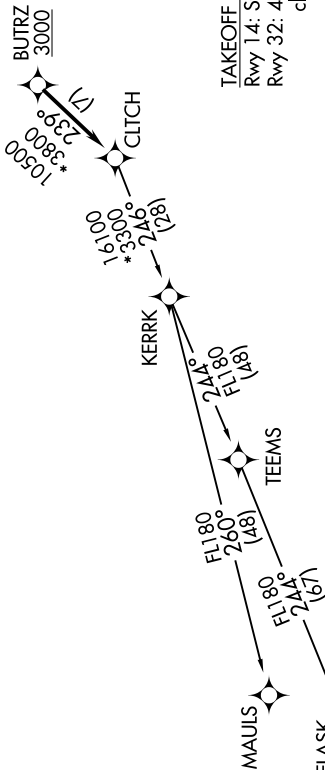
Climb on heading assigned by ATC, expect RADAR vectors to BUTRZ, then on track 239° to CLTCH, thence....

....on assigned transition, maintain altitude assigned by ATC, expect clearance to filed altitude within ten (10) minutes after departure.

FLASK TRANSITION (CLTCH3.FLASK)
MAULS TRANSITION (CLTCH3.MAULS)

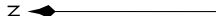
POTOMAC DEP CON
118.95 257.2
ATIS
128.175
CLNC DEL
351.8
GND CON
121.9 351.8
DAVISON TOWER ★
124.275 (CTAF) 229.4

NOTE: RNAV 1.
NOTE: RADAR required.
NOTE: DME/DME/IRU or GPS required.
NOTE: Turbo-jets only.



TAKEOFF MINIMUMS:

Rwy 14: Standard.
Rwy 32: 400-2 or Standard with minimum climb of 300' per NM to 500.



NOTE: Chart not to scale.

CLTCH THREE DEPARTURE (RNAV)

(CLTCH3.CLTCH) 31DEC20

NE-3, 15 MAY 2025 to 12 JUN 2025