

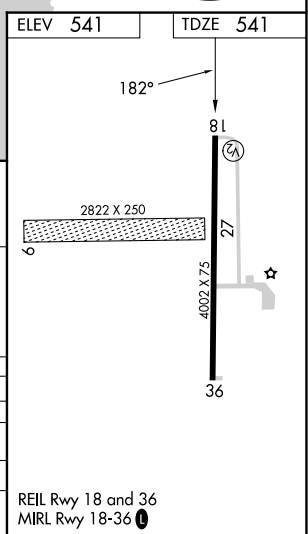
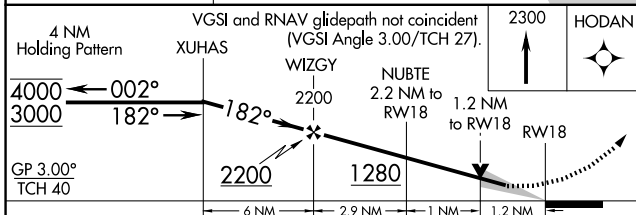
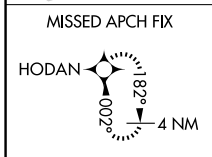
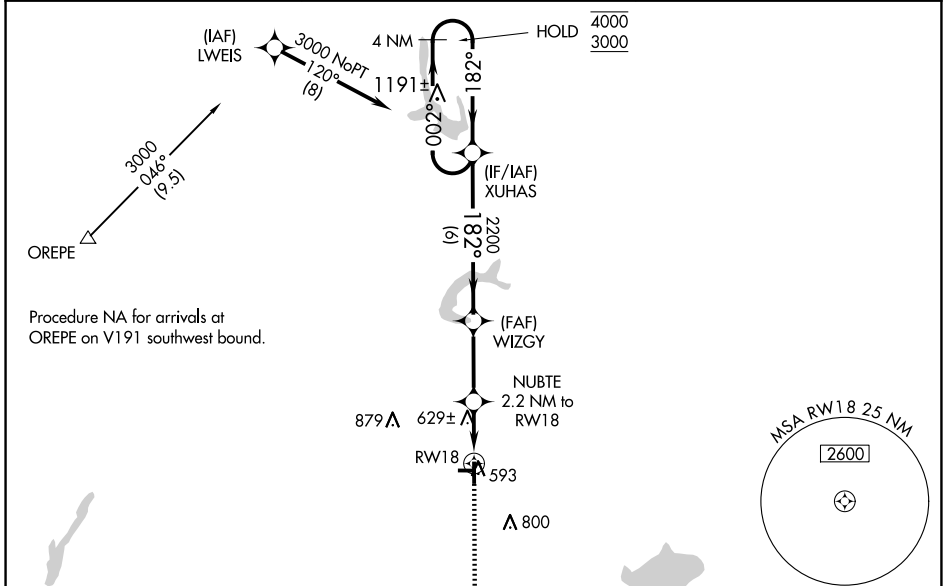
| | | |
|--|------------------------|---|
| WAAS CH 69638 W18A | APP CRS 182° | Rwy Idg 4002 TDZE 541 Apt Elev 541 |
|--|------------------------|---|

RNAV (GPS) RWY 18

GREENVILLE (G.R.E.)

| | | |
|-----------------|---|--|
| RNP APCH - GPS. | <p>⚠ Circling NA to Rwy 9 and 27. Baro-VNAV and VDP NA when using Salem altimeter setting. For uncompensated Baro-VNAV systems, LNAV/VNAV NA below -16°C or above 54°C.</p> <p>⚠ NA Procedure NA at night. When local altimeter setting not received, use Salem altimeter setting and increase LPV DA to 905 feet; increase LNAV/VNAV DA to 905 feet; increase all MDAs 60 feet and LNAV visibility Cat C/D ¼ SM, and Circling visibility Cat D ¼ SM.</p> | MISSED APPROACH: Climb to 2300 direct HODAN and hold. |
|-----------------|---|--|

| | | |
|--------------------------|---|----------------------------------|
| AWOS-AV 123.05 | KANSAS CITY CENTER 124.3 269.15 | UNICOM 123.05 (CTAF) 0 |
|--------------------------|---|----------------------------------|



| CATEGORY | A | B | C | D |
|--------------|----------------------|-----------------------|-----------------------|-------------------------------|
| LPV DA | | 848-1 | 307 (400-1) | |
| LNAV/VNAV DA | | 848-1 | 307 (400-1) | |
| LNAV MDA | 940-1 | 399 (400-1) | 940-1 1/8 | 399 (400-1 1/8) |
| CIRCLING | 980-1 439 (500-1) | 1000-1 459 (500-1) | 1220-2 679 (700-2) | 1240-2 1/4 699 (700-2 1/4) |

REIL Rwy 18 and 36
MIRL Rwy 18-36 0

EC-3, 15 MAY 2025 to 12 JUN 2025

EC-3, 15 MAY 2025 to 12 JUN 2025