

APP CRS	Rwy Idg	4300
281°	TDZE	1934
	Apt Elev	1934

RNAV (GPS) RWY 28

ST MARYS MUNI (OYM)

RNP APCH - GPS.

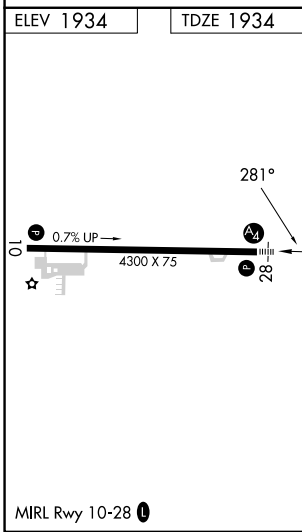
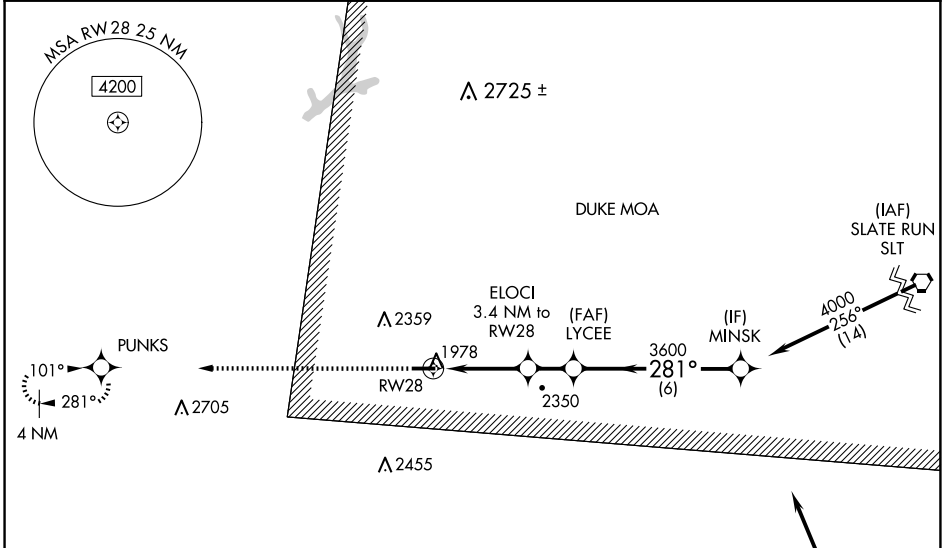
⚠ Rwy 28 helicopter visibility reduction below 3/4 SM NA. Inop table does not apply to LNAV Cat A. VDP NA when using Bradford altimeter setting. When local altimeter setting not received, use Bradford altimeter setting and increase all MDA 240 feet, LNAV visibility Cats B/C/D 1/2 SM, and Circling visibility Cats B/C 1/2 SM. For inop ALS increase LNAV visibility Cat C/D to 2 1/2 SM. For inop ALS when using Bradford altimeter setting, increase LNAV visibility Cat C/D to 3 SM.

⚠ -36°C

MALS

MISSED APPROACH:
Climb to 4000 direct PUNKS and hold.

AWOS-3P 118.05	CLEVELAND CENTER 126.725 291.65	ALTOONA CLNC DEL 122.4	UNICOM 122.7 (CTAF) 0
--------------------------	---	----------------------------------	---------------------------------



ELEV 1934	TDZE 1934	MIRL Rwy 10-28 0	
4000	PUNKS	ELOCI 3.4 NM to RWY 28	LYCEE
3040		3.04° TCH 40°	MINSK
2.5	1 NM	1.6 NM	6 NM
4000		3600	4000
4000 (12.8)	(IAF) KEATING ETG		
4000 (1.4)	(IAF) SLATE RUN SLT		
3600 (6)	(IF) MINSK		
2350	(FAF) LYCEE		
1978	ELOCI		
2705	PUNKS		
2724			
2725 ±			
2455			
2705			
4 NM			
101°			
281°			
281°			
0.7% UP			
4300 X 75			
28			
3040			
3600			
4000			
4000 (12.8)			
3600 (6)			
2350			
1978			
2705			
2724			
2725 ±			
2455			
4 NM			
101°			
281°			
0.7% UP			
4300 X 75			
28			
3040			
3600			
4000			
4000 (12.8)			
3600 (6)			
2350			
1978			
2705			
2724			
2725 ±			
2455			
4 NM			
101°			
281°			
0.7% UP			
4300 X 75			
28			
3040			
3600			
4000			
4000 (12.8)			
3600 (6)			
2350			
1978			
2705			
2724			
2725 ±			
2455			
4 NM			
101°			
281°			
0.7% UP			
4300 X 75			
28			
3040			
3600			
4000			
4000 (12.8)			
3600 (6)			
2350			
1978			
2705			
2724			
2725 ±			
2455			
4 NM			
101°			
281°			
0.7% UP			
4300 X 75			
28			
3040			
3600			
4000			
4000 (12.8)			
3600 (6)			
2350			
1978			
2705			
2724			
2725 ±			
2455			
4 NM			
101°			
281°			
0.7% UP			
4300 X 75			
28			
3040			
3600			
4000			
4000 (12.8)			
3600 (6)			
2350			
1978			
2705			
2724			
2725 ±			
2455			
4 NM			
101°			
281°			
0.7% UP			
4300 X 75			
28			
3040			
3600			
4000			
4000 (12.8)			
3600 (6)			
2350			
1978			
2705			
2724			
2725 ±			
2455			
4 NM			
101°			
281°			
0.7% UP			
4300 X 75			
28			
3040			
3600			
4000			
4000 (12.8)			
3600 (6)			
2350			
1978			
2705			
2724			
2725 ±			
2455			
4 NM			
101°			
281°			
0.7% UP			
4300 X 75			
28			
3040			
3600			
4000			
4000 (12.8)			
3600 (6)			
2350			
1978			
2705			
2724			
2725 ±			
2455			
4 NM			
101°			
281°			
0.7% UP			
4300 X 75			
28			
3040			
3600			
4000			
4000 (12.8)			
3600 (6)			
2350			
1978			
2705			
2724			
2725 ±			
2455			
4 NM			
101°			
281°			
0.7% UP			
4300 X 75			
28			
3040			
3600			
4000			
4000 (12.8)			
3600 (6)			
2350			
1978			
2705			
2724			
2725 ±			
2455			
4 NM			
101°			
281°			
0.7% UP			
4300 X 75			
28			
3040			
3600			
4000			
4000 (12.8)			
3600 (6)			
2350			
1978			
2705			
2724			
2725 ±			
2455			
4 NM			
101°			
281°			
0.7% UP			
4300 X 75			
28			
3040			
3600			
4000			
4000 (12.8)			
3600 (6)			
2350			
1978			
2705			
2724			
2725 ±			
2455			
4 NM			
101°			
281°			
0.7% UP			
4300 X 75			
28			
3040			
3600			
4000			
4000 (12.8)			
3600 (6)			
2350			
1978			
2705			
2724			
2725 ±			
2455			
4 NM			
101°			
281°			
0.7% UP			
4300 X 75			
28			
3040			
3600			
4000			
4000 (12.8)			
3600 (6)			
2350			
1978			
2705			
2724			
2725 ±			
2455			
4 NM			
101°			
281°			
0.7% UP			
4300 X 75			
28			
3040			
3600			
4000			
4000 (12.8)			
3600 (6)			
2350			
1978			
2705			
2724			
2725 ±			
2455			
4 NM			
101°			
281°			
0.7% UP			
4300 X 75			
28			
3040			
3600			
4000			
4000 (12.8)			
3600 (6)			
2350			
1978			
2705			
2724			
2725 ±			
2455			
4 NM			
101°			
281°			
0.7% UP			
4300 X 75			
28			
3040			
3600			
4000			
4000 (12.8)			
3600 (6)			
2350			
1978			
2705			
2724			
2725 ±			
2455			
4 NM			
101°			
281°			
0.7% UP			
4300 X 75			
28			
3040			
3600			
4000			
4000 (12.8)			
3600 (6)			
2350			
1978			
2705			
2724			
2725 ±			
2455			
4 NM			
101°			
281°			
0.7% UP			