

(ZETTR4.ZETTR) 24137

# ZETTR FOUR DEPARTURE (RNAV)

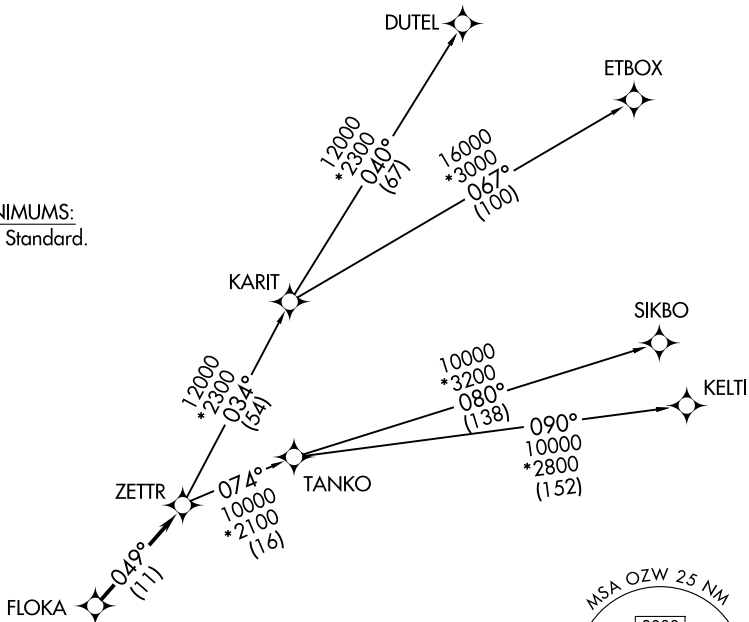
LIVINGSTON COUNTY SPENCER J HARDY (OZW)  
AL-5485 (FAA) HOWELL, MICHIGAN

DETROIT DEP CON  
132.35 284.0  
AWOS-3  
118.875  
CLNC DEL  
121.725  
CTAF  
123.0

RNAV 1 - DME/DME/IRU or GPS.  
RADAR required.

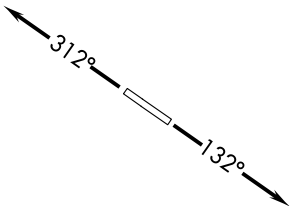
**TOP ALTITUDE:  
ASSIGNED BY ATC**

TAKEOFF MINIMUMS:  
Rwys 13, 31: Standard.



EC-1, 15 MAY 2025 to 12 JUN 2025

EC-1, 15 MAY 2025 to 12 JUN 2025



NOTE: Turbojet departures at/above 10000, maintain 280K until advised by ATC.  
NOTE: TANKO Transition: For use by CYYZ area arrivals only, or as assigned by ATC.

NOTE: Chart not to scale.

## DEPARTURE ROUTE DESCRIPTION

TAKEOFF RUNWAY 13: Climb on heading 132° or as assigned by ATC, thence....

TAKEOFF RUNWAY 31: Climb on heading 312° or as assigned by ATC, thence....

....for RADAR vectors to FLOKA, then on track 049° to ZETTR, then on (transition). Maintain ATC assigned altitude, expect filed altitude 10 minutes after departure.

DUTEL TRANSITION (ZETTR4.DUTEL):

ETBOX TRANSITION (ZETTR4.ETBOX):

KELTI TRANSITION (ZETTR4.KELTI):

SIKBO TRANSITION (ZETTR4.SIKBO):

TANKO TRANSITION (ZETTR4.TANKO):

ZETTR FOUR DEPARTURE (RNAV)  
(ZETTR4.ZETTR) 16MAY24

HOWELL, MICHIGAN  
LIVINGSTON COUNTY SPENCER J HARDY (OZW)