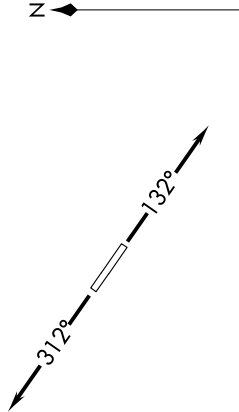


EC-1, 15 MAY 2025 to 12 JUN 2025

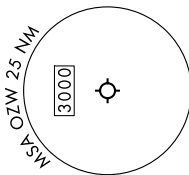
DETROIT DEP CON
132.35 284.0
AWOS-3
118.875
CINC DEL
121.725
CTAF
123.0

**TOP ALTITUDE:
ASSIGNED BY ATC**

RNAV-1 DME/DME/IRU or GPS.
RADAR required.



TAKEOFF MINIMUMS:
Rvys 13, 31 : Standard.



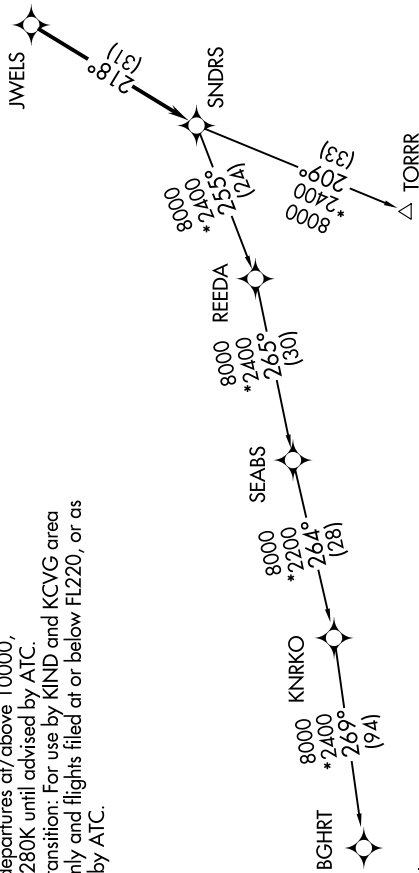
DEPARTURE ROUTE DESCRIPTION

TAKEOFF RUNWAY 13: Climb on heading 132° or as assigned by ATC, thence....
TAKEOFF RUNWAY 31: Climb on heading 312° or as assigned by ATC, thence....

....for RADAR vectors to JWELS, then on track 218° to SNDRS, then on (transition). Maintain ATC assigned altitude, expect filed altitude 10 minutes after departure.

BGHRT TRANSITION (SNDRS3.BGHRT):
TORRR TRANSITION (SNDRS3.TORRR):

NOTE: Turbojet departures at/above 10000, maintain 280K until advised by ATC.
NOTE: TORRR Transition: For use by KIND and KCVG area arrivals only and flights filed at or below FL220, or as assigned by ATC.



NOTE: Chart not to scale.

EC-1, 15 MAY 2025 to 12 JUN 2025