

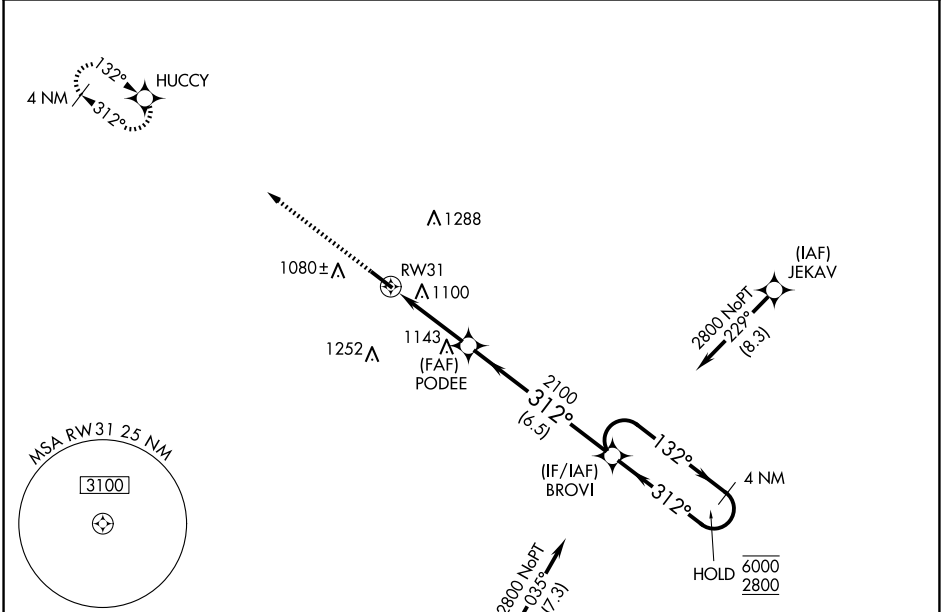
WAAS CH <b>99722</b> <b>W31A</b>	APP CRS <b>312°</b>	Rwy Idg <b>5002</b> TDZE <b>943</b> Apt Elev <b>962</b>
--	------------------------	---

# RNAV (GPS) RWY 31

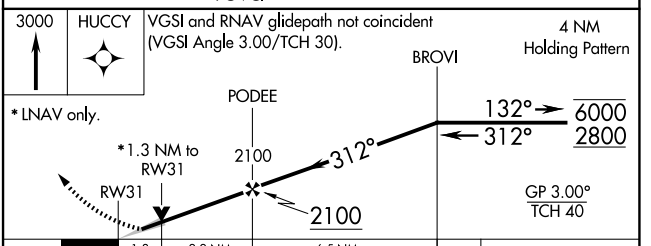
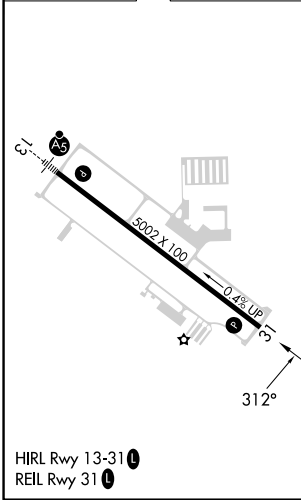
LIVINGSTON COUNTY SPENCER J HARDY (OZW)

RNP APCH.			MISSED APPROACH: Climb to 3000 direct HUCCY and hold.
<p>▼ ▲ For uncompensated Baro-VNAV systems, LNAV/VNAV NA below -16°C or above 54°C.</p>			

AWOS-3 <b>118.875</b>	DETROIT APP CON <b>132.35 284.0</b>	CLNC DEL <b>121.725 (GCO)</b>	UNICOM <b>123.0 (CTAF) 0</b>
--------------------------	--	----------------------------------	---------------------------------



ELEV 962	TDZE 943
----------	----------



CATEGORY	A	B	C	D
LPV DA		1143-3/4	200 (200-3/4)	
LNAV/VNAV DA		1410-1 5/8	467 (500-1 5/8)	
LNAV MDA	1400-1	457 (500-1)	1400-1 3/8	457 (500-1 3/8)
CIRCLING	1400-1 438 (500-1)	1420-1 458 (500-1)	1600-1 3/4 638 (700-1 3/4)	1600-2 638 (700-2)

EC-1, 15 MAY 2025 to 12 JUN 2025

EC-1, 15 MAY 2025 to 12 JUN 2025