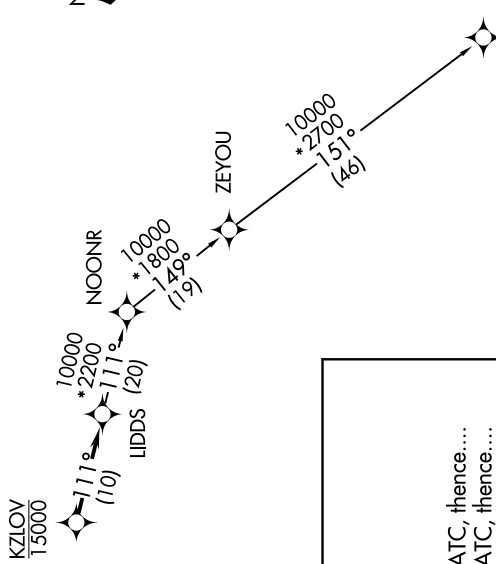


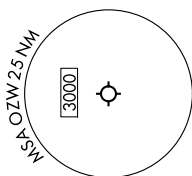
DETROIT DEP CON  
132.35 284.0  
AWOS-3  
118.875  
CINC DEL  
121.725  
CTAF  
123.0

RNAV 1 - DME/DME/IRU or GPS.  
RADAR required.  
RADAR required for non-GPS equipped aircraft.

TAKEOFF MINIMUMS:  
Rwy 13, 31: Standard.



NOTE: Turbopjet departures at/above 10000,  
maintain 280K until advised by ATC.



NOTE: Chart not to scale.

**DEPARTURE ROUTE DESCRIPTION**

TAKEOFF RUNWAY 13: Climb on heading 132° or as assigned by ATC, thence....  
TAKEOFF RUNWAY 31: Climb on heading 312° or as assigned by ATC, thence....

...for RADAR vectors to cross KZLOV at or below 15000, then on track 111° to LIDDS, then on (transition). Maintain ATC assigned altitude, expect filed altitude 10 minutes after departure.

GRIVY TRANSITION (LIDDS4.GRIVY):