

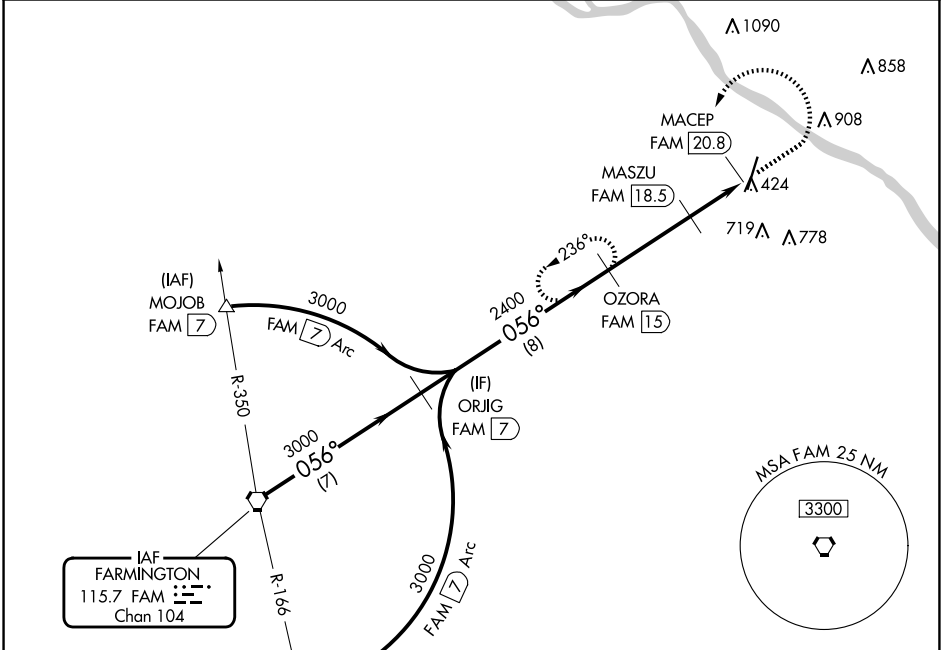
VORTAC FAM 115.7 Chan 104	APP CRS 056°	Rwy Idg TDZE Apt Elev	N/A N/A 372
---	------------------------	-----------------------------	--

VOR-A

PERRYVILLE RGNL (PCD)

⚠ DME required.	MISSED APPROACH: Climb to 1500 then climbing left turn to 2400 on FAM VORTAC R-056 to OZORA/FAM 1.5 DME and hold.
------------------------	---

AWOS-3PT 118.95	KANSAS CITY CENTER 127.475 346.275	UNICOM 122.8 (CTAF) Ⓛ
---------------------------	--	--

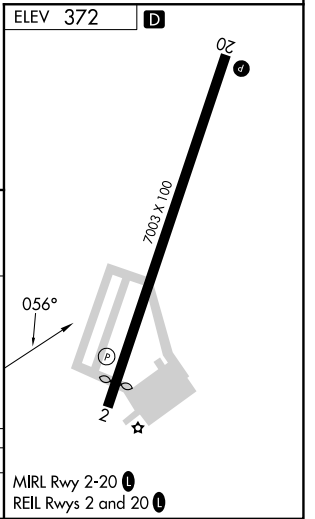
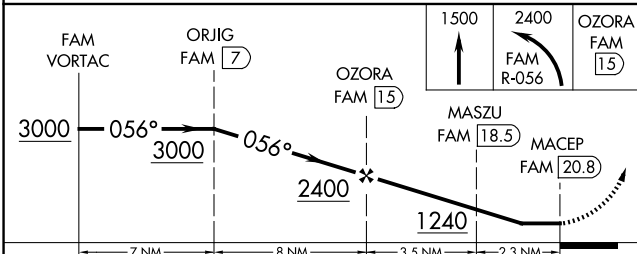


NC-3, 15 MAY 2025 to 12 JUN 2025

NC-3, 15 MAY 2025 to 12 JUN 2025

Procedure NA for arrival at FAM VORTAC on airway radials 012 CW 114.

⚠ 1589



CATEGORY	A	B	C	D
CIRCLING	1040-1	668 (700-1)	1260-2 ³ / ₄ 888 (900-2 ³ / ₄)	1260-3 888 (900-3)