

WAAS CH <b>93618</b> <b>W02A</b>	APP CRS <b>017°</b>	Rwy Idg TDZE <b>372</b> Apt Elev <b>373</b>
----------------------------------------	------------------------	---------------------------------------------------

# RNAV (GPS) RWY 2

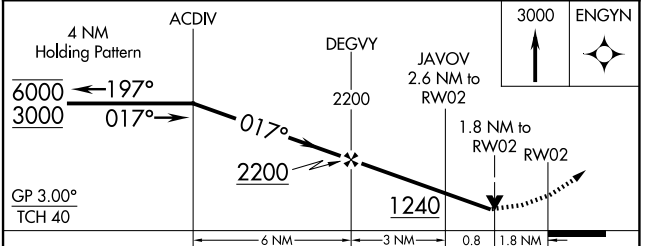
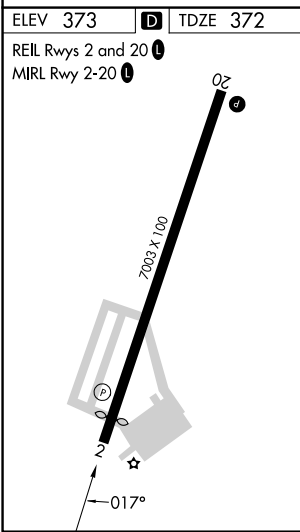
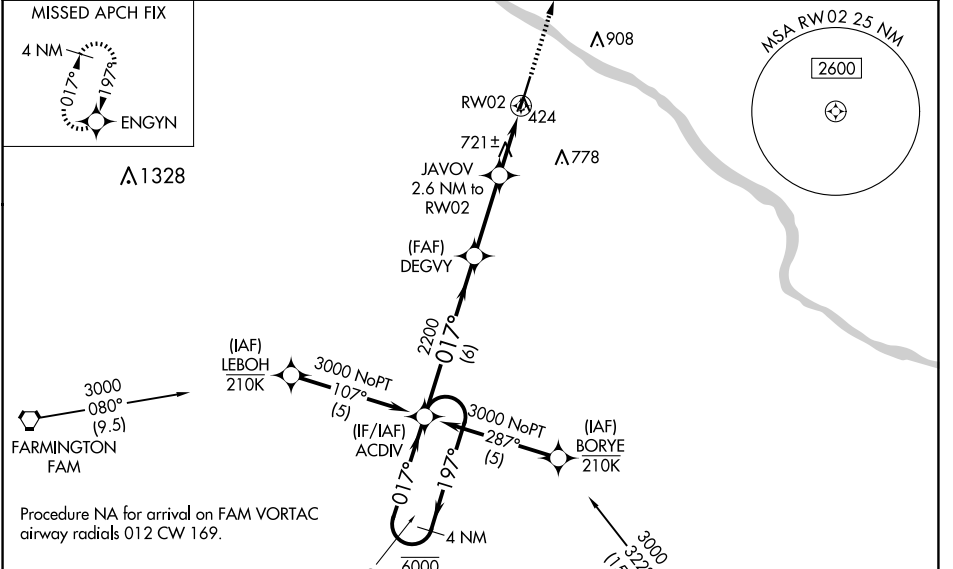
PERRYVILLE RGNL (PCD)

RNP APCH - GPS.

**⚠** Rwy 2 helicopter visibility reduction below 3/4 SM NA. Baro-VNAV and VDP NA when using CGI altimeter setting. For uncompensated Baro-VNAV systems, LNAV/VNAV NA below -15°C or above 54°C. When local altimeter setting not received, use CGI altimeter setting and increase LPV DA to 1223 feet and all visibility 1/2 SM. Increase LNAV/VNAV DA to 1154 feet and all visibilities 1/2 SM. Increase all MDAs 100 feet and LNAV visibility Cat C/D 1/4 SM and Circling visibility Cat C 1/4 SM.

MISSED APPROACH: Climb to 3000 direct ENGYN and hold.

AWOS-3PT <b>118.95</b>	KANSAS CITY CENTER <b>127.475 346.275</b>	UNICOM <b>122.8 (CTAF) 0</b>
---------------------------	----------------------------------------------	---------------------------------



CATEGORY	A	B	C	D
LPV DA	1123-2		751 (800-2)	
LNAV/VNAV DA	1054-2		682 (700-2)	
LNAV MDA	980-1 608 (700-1)		980-1 3/4 608 (700-1 3/4)	
CIRCLING	980-1 607 (700-1)	1000-1 627 (700-1)	1260-2 3/4 887 (900-2 3/4)	1260-3 887 (900-3)

NC-3, 15 MAY 2025 to 12 JUN 2025

NC-3, 15 MAY 2025 to 12 JUN 2025