

WAAS CH <b>77826</b> <b>W08A</b>	APP CRS <b>087°</b>	Rwy Idg <b>9000</b> TDZE <b>95</b> Apt Elev <b>96</b>
--	------------------------	---

# RNAV (GPS) Z RWY 8L

GEORGE BUSH INTCNL/HOUSTON (IAH)

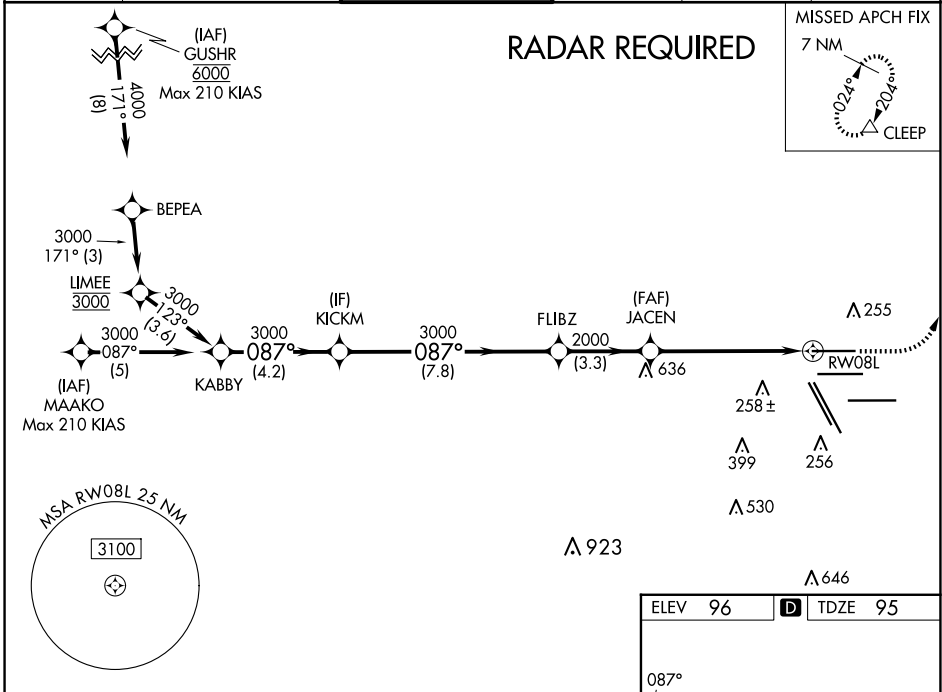
**▼** For uncompensated Baro-VNAV systems, LNAV/VNAV NA below -3°C (27°F) or above 54°C (130°F). For inop ALSF, increase LPV Cat E visibility to RVR 4000, LNAV/VNAV Cat E visibility to 1¼, and LNAV Cat C/D/E visibility to 1¾. Simultaneous approach authorized with Rwy 8R and Rwy 9. DME/DME RNP-0.3 NA. Use of FD or AP providing RNAV track guidance required during simultaneous operations. LNAV procedure NA during simultaneous operations.

ALSF-2



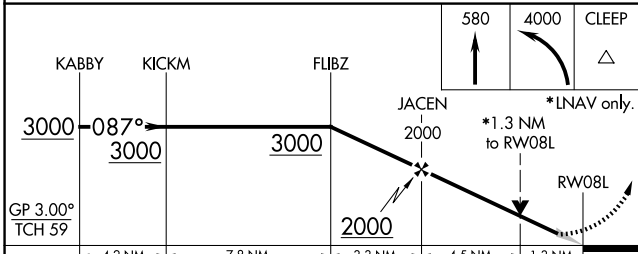
MISSED APPROACH: Climb to 580 then climbing left turn to 4000 direct CLEEP and hold.

D-ATIS <b>124.05</b>	HOUSTON APP CON <b>120.05 379.1 EAST</b> <b>124.35 316.15 WEST</b>	HOUSTON TOWER <b>120.72 290.2</b>	GND CON <b>121.7</b>	CLNC DEL <b>128.1</b>	CPDLC
-------------------------	--	--------------------------------------	-------------------------	--------------------------	-------



SC-5, 15 MAY 2025 to 12 JUN 2025

SC-5, 15 MAY 2025 to 12 JUN 2025



CATEGORY	A	B	C	D	E
LPV DA		295/18	200 (200-½)		
LNAV/VNAV DA		486/40	391 (400-¾)		
LNAV MDA	580/24	485 (500-½)	580/50	485 (500-1)	

