

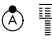
APP CRS	Rwy Idg	9402
267°	TDZE	95
	Apt Elev	96

RNAV (RNP) Y RWY 26L

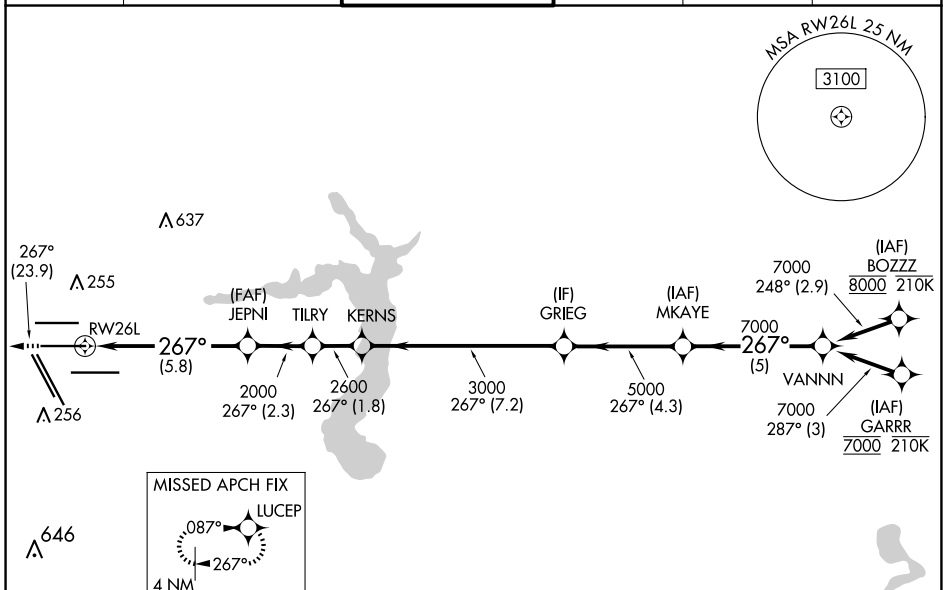
GEORGE BUSH INTCNL/HOUSTON (IAH)

RNP AR APCH - GPS.

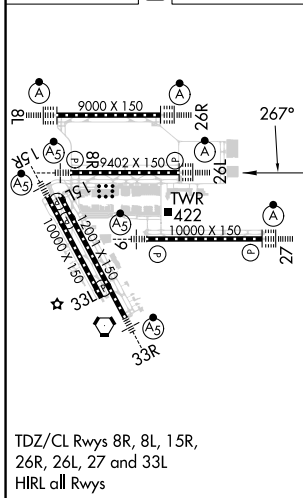
▼ For uncompensated Baro-VNAV systems, procedure NA below -3°C or above 54°C. Simultaneous approach authorized. For inop ALS, increase RNP 0.13 all Cats visibility to RVR 5100, and RNP 0.30 all Cats visibility to 1½ SM.

ALSIF-2  MISSED APPROACH: Climb to 3000 on track 267° to LUCEP and hold.

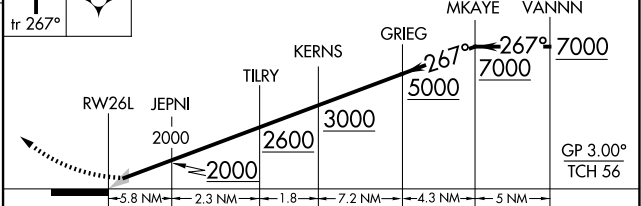
D-ATIS	HOUSTON APP CON	HOUSTON TOWER	GND CON	CLNC DEL	CPDLC
124.05	120.05 379.1 EAST 124.35 316.15 WEST	125.35 290.2	118.575	128.1	



ELEV	96	D	TDZE	95
------	-----------	----------	------	-----------



VGSi and RNAV glidepath not coincident (VGSi Angle 3.00°/TCH 71°).



CATEGORY	A	B	C	D
RNP 0.13 DA		414/40	319 (400-¾)	
RNP 0.30 DA		549/55	454 (500-1)	

AUTHORIZATION REQUIRED

SC-5, 15 MAY 2025 to 12 JUN 2025

SC-5, 15 MAY 2025 to 12 JUN 2025