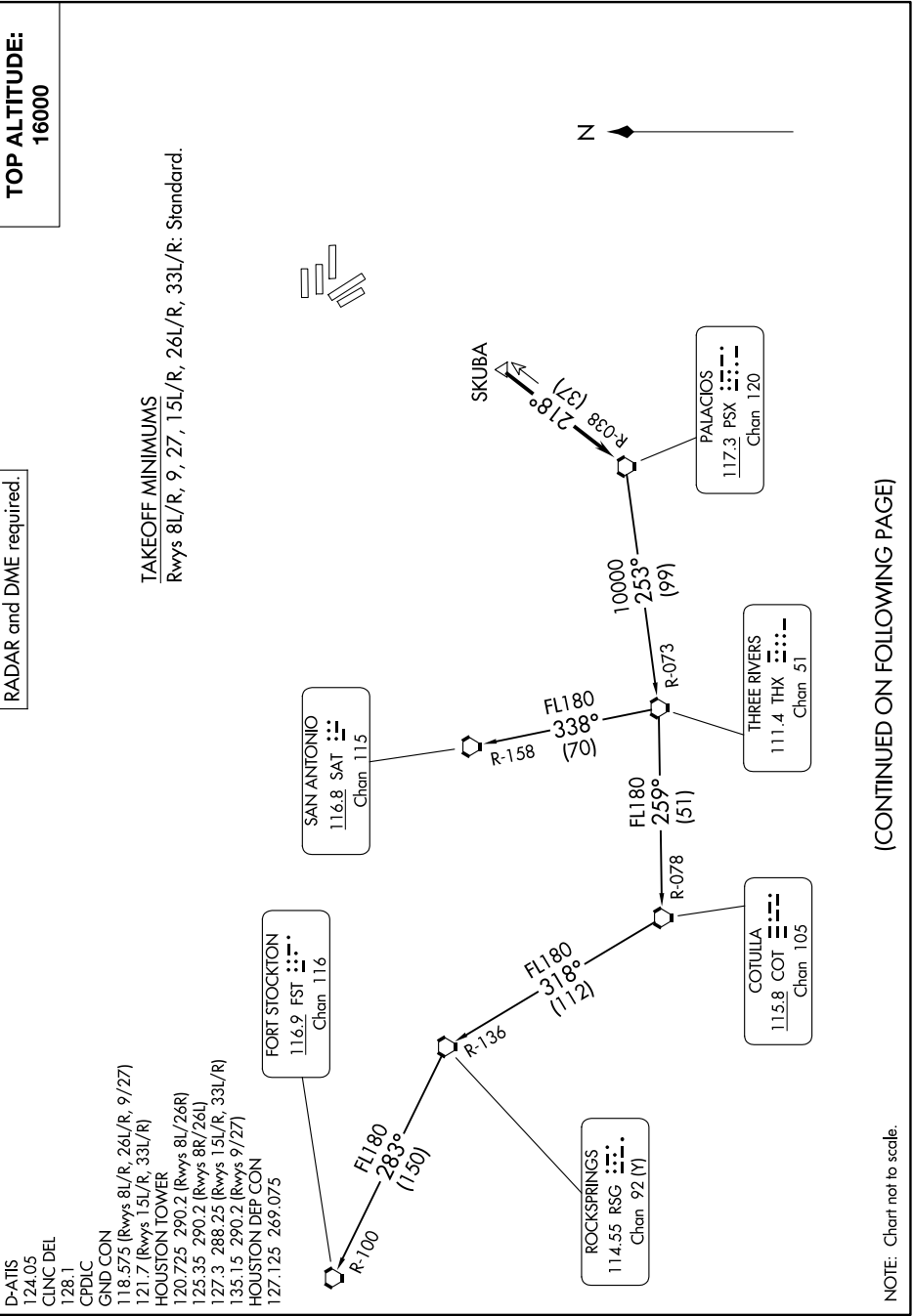


TOP ALTITUDE:  
16000

RADAR and DME required.

TAKEOFF MINIMUMS  
Rwys 8L/R, 9, 27, 15L/R, 26L/R, 33L/R: Standard.

SC-5, 15 MAY 2025 to 12 JUN 2025



- D-ATIS 124.05
- CINC DEL 128.1
- CPDLC 128.1
- GND CON 118.575 (Rwys 8L/R, 26L/R, 9/27)
- 121.7 (Rwys 15L/R, 33L/R)
- HOUSTON TOWER 120.725 290.2 (Rwys 8L/26R)
- 125.35 290.2 (Rwys 8R/26L)
- 127.3 288.25 (Rwys 15L/R, 33L/R)
- 135.15 290.2 (Rwys 9/27)
- HOUSTON DEP CON 127.125 269.075

(CONTINUED ON FOLLOWING PAGE)

SC-5, 15 MAY 2025 to 12 JUN 2025

NOTE: Chart not to scale.