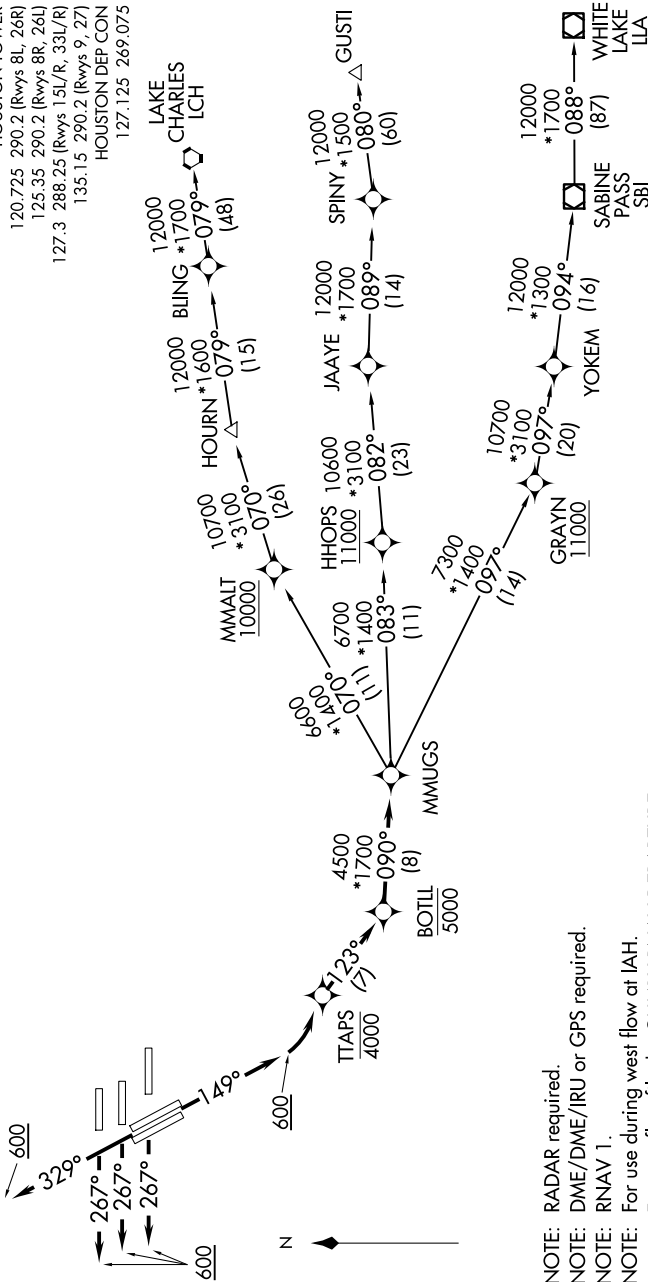


SC-5, 15 MAY 2025 to 12 JUN 2025

TOP ALTITUDE:
16000

TAKEOFF MINIMUMS
Rwys 15L/R, 26L/R, 27, 33L/R: Standard
with minimum climb of 500' per NM to 800.



NOTE: Chart not to scale.

(NARRATIVE ON FOLLOWING PAGE)

SC-5, 15 MAY 2025 to 12 JUN 2025