

(INDIE8.INDIE) 21280

AL-5461 (FAA)

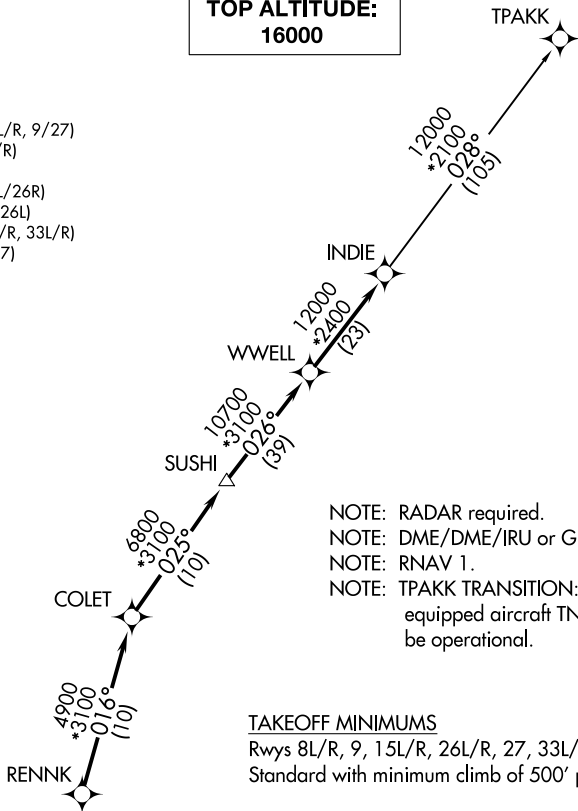
GEORGE BUSH INTCNL/HOUSTON (IAH)

INDIE EIGHT DEPARTURE (RNAV)

HOUSTON, TEXAS

D-ATIS
 124.05
 CLNC DEL
 128.1
 CPDLC
 GND CON
 118.575 (Rwys 8L/R, 26L/R, 9/27)
 121.7 (Rwys 15L/R, 33L/R)
 HOUSTON TOWER
 120.725 290.2 (Rwys 8L/26R)
 125.35 290.2 (Rwys 8R/26L)
 127.3 288.25 (Rwys 15L/R, 33L/R)
 135.15 290.2 (Rwys 9/27)
 HOUSTON DEP CON
 132.25 285.425

**TOP ALTITUDE:
 16000**



- NOTE: RADAR required.
- NOTE: DME/DME/IRU or GPS required.
- NOTE: RNAV 1.
- NOTE: TPAKK TRANSITION: For non GPS equipped aircraft TNV DME must be operational.

TAKEOFF MINIMUMS

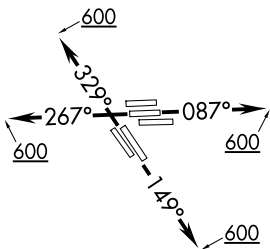
Rwys 8L/R, 9, 15L/R, 26L/R, 27, 33L/R:
 Standard with minimum climb of 500' per NM to 600.

DEPARTURE ROUTE DESCRIPTION

- TAKEOFF RUNWAYS 8L/R, 9: Climb on heading 087° to 600 for RADAR vectors to RENNK, then . . .
- TAKEOFF RUNWAYS 15L/R: Climb on heading 149° to 600 for RADAR vectors to RENNK, then . . .
- TAKEOFF RUNWAYS 26L/R, 27: Climb on heading 267° to 600 for RADAR vectors to RENNK, then . . .
- TAKEOFF RUNWAYS 33L/R: Climb on heading 329° to 600 for RADAR vectors to RENNK, then . . .

. . . on track 016° to COLET, then on track 025° to SUSHI, then on track 026° to WWELL, then on track 026° to INDIE, then on (transition). Maintain 16000 or as assigned by ATC. Expect filed altitude 10 minutes after departure.

TPAKK TRANSITION (INDIE8.TPAKK)



NOTE: Chart not to scale.

INDIE EIGHT DEPARTURE (RNAV)

HOUSTON, TEXAS

(INDIE8.INDIE) 07OCT21

GEORGE BUSH INTCNL/HOUSTON (IAH)

SC-5, 15 MAY 2025 to 12 JUN 2025

SC-5, 15 MAY 2025 to 12 JUN 2025