

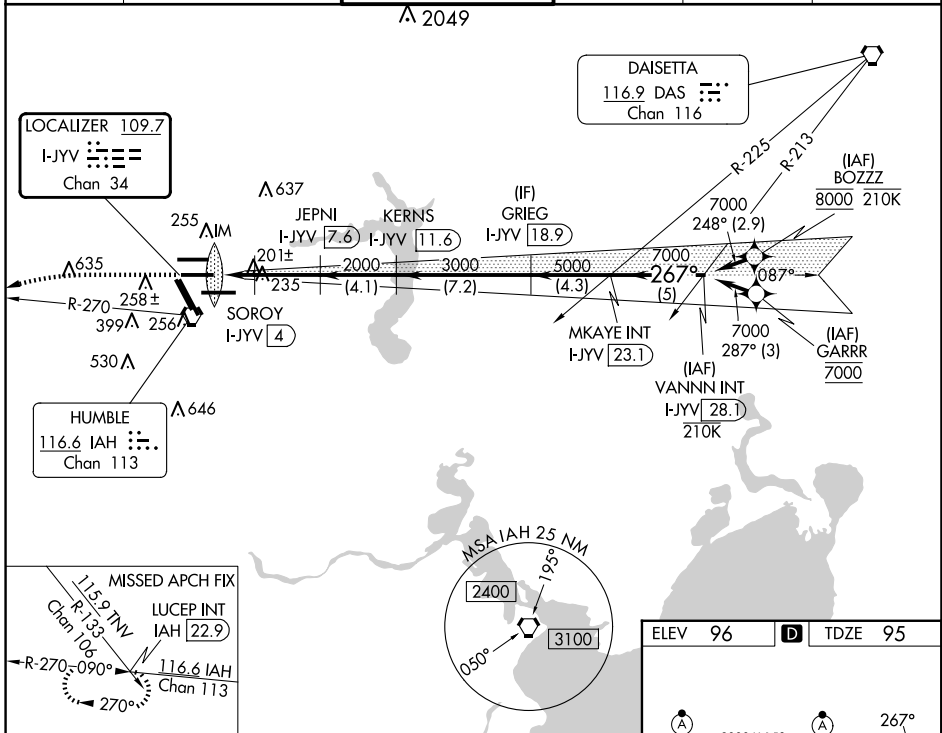
LOC/DME I-JYV 109.7 Chan 34	APP CRS 267°	Rwy Idg TDZE Apt Elev	9402 95 96
---	------------------------	-----------------------------	---------------------------------------

ILS or LOC RWY 26L

GEORGE BUSH INTCNL/HOUSTON (IAH)

DME required. From BOZZZ, GARRR: RNAV 1-GPS required.		ALSF-2 	MISSED APPROACH: Climb to 3000 then left turn heading 240° and IAH VORTAC R-270 to LUCEP INT/IAH 22.9 DME and hold.
Simultaneous approach authorized with Rwy 26R and Rwy 27. For inop ALS, increase S-ILS 26L Cat E visibility to RVR 4000, S-LOC 26L Cat C/D/E visibility to RVR 5000.			

D-ATIS 124.05	HOUSTON APP CON 120.05 379.1 EAST 124.35 316.15 WEST	HOUSTON TOWER 125.35 290.2	GND CON 118.575	CLNC DEL 128.1	CPDLC
-------------------------	--	--------------------------------------	---------------------------	--------------------------	-------



SC-5, 15 MAY 2025 to 12 JUN 2025

SC-5, 15 MAY 2025 to 12 JUN 2025

ELEV 96	D	TDZE 95
TDZ/CL Rwy 8R, 8L, 15R, 26R, 26L, 27 and 33L HIRL all Rwy's		
FAF to MAP 5.8 NM		
Knots	60	90 120 150 180
Min:Sec	5:48	3:52 2:54 2:19 1:56

3000	hdg 240°	IAH R-270	LUCEP INT	VGSI and ILS glidepath not coincident (VGSI Angle 3.00/TCH 71).	
*LOC only					
I-JYV 1.7	*I-JYV 2.7	SOROI I-JYV 4	JEPNI I-JYV 7.6	KERN I-JYV 11.6	
			GRIEG I-JYV 18.9	MKAYE INT I-JYV 23.1	
			VANNN INT I-JYV 28.1		
0.1	0.8 NM	1.4 NM	3.5 NM	4.1 NM	
			7.2 NM	4.3 NM	
			5 NM		
CATEGORY	A	B	C	D	E
S-ILS 26L	295/18		200 (200-½)		
S-LOC 26L	460/24	365 (400-½)	460/35	365 (400-¾)	