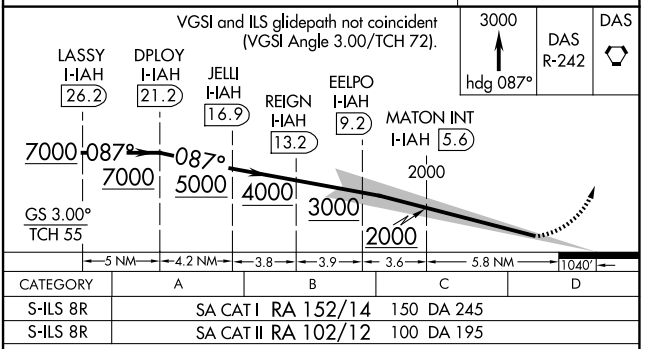
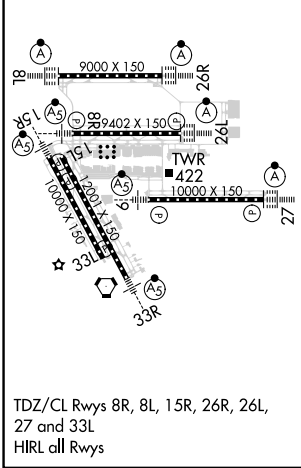
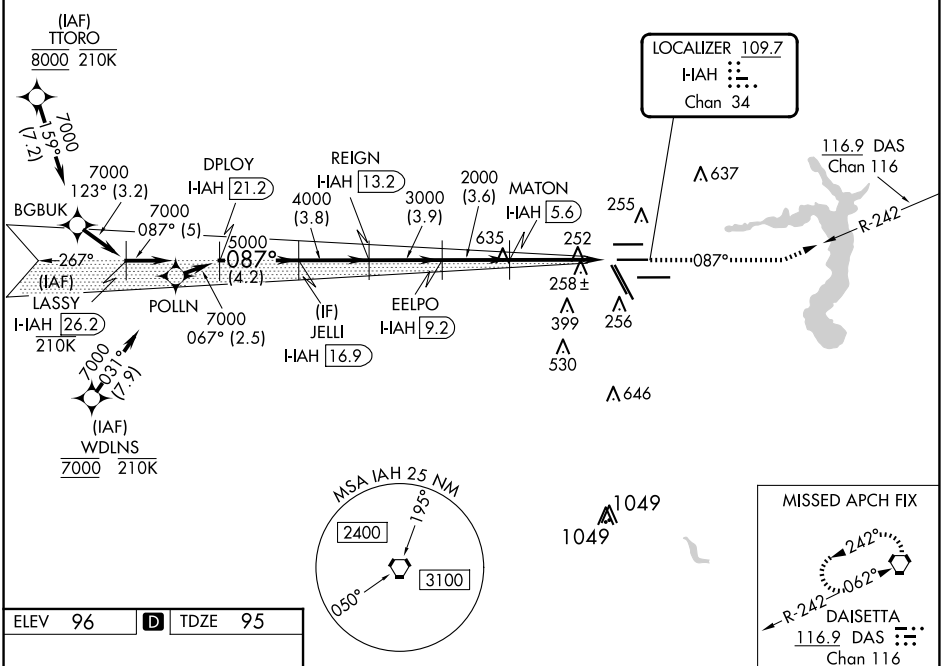


LOC/DME I-IAH 109.7 Chan 34	APP CRS 087°	Rwy Idg 9402 TDZE 95 Apt Elev 96
---	------------------------	---

ILS RWY 8R (SA CAT I & II)

GEORGE BUSH INTCNL/HOUSTON (IAH)

RNAV 1-GPS or RADAR required for procedure entry, DME.			MALSR	MISSED APPROACH: Climb to 3000 on heading 087° and on DAS VORTAC R-242 to DAS VORTAC and hold.	
Simultaneous approach authorized. SA CAT I: Requires specific OPSPEC, MSPEC, or LOA approval and use of HUD to DH. SA CAT II: Reduced lighting: requires specific OPSPEC, MSPEC, or LOA approval and use of autoland or HUD to touchdown.					
D-ATIS 124.05	HOUSTON APP CON 120.05 379.1 EAST 124.35 316.15 WEST	HOUSTON TOWER 125.35 290.2	GND CON 118.575	CLNC DEL 128.1	CPDLC ▲ 2049



SA CATEGORY I and II ILS SPECIAL AIRCREW & AIRCRAFT CERTIFICATION REQUIRED

SC-5, 15 MAY 2025 to 12 JUN 2025

SC-5, 15 MAY 2025 to 12 JUN 2025