

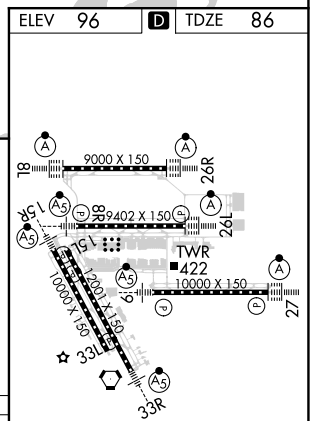
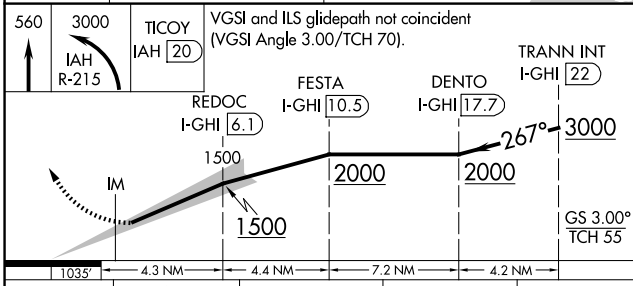
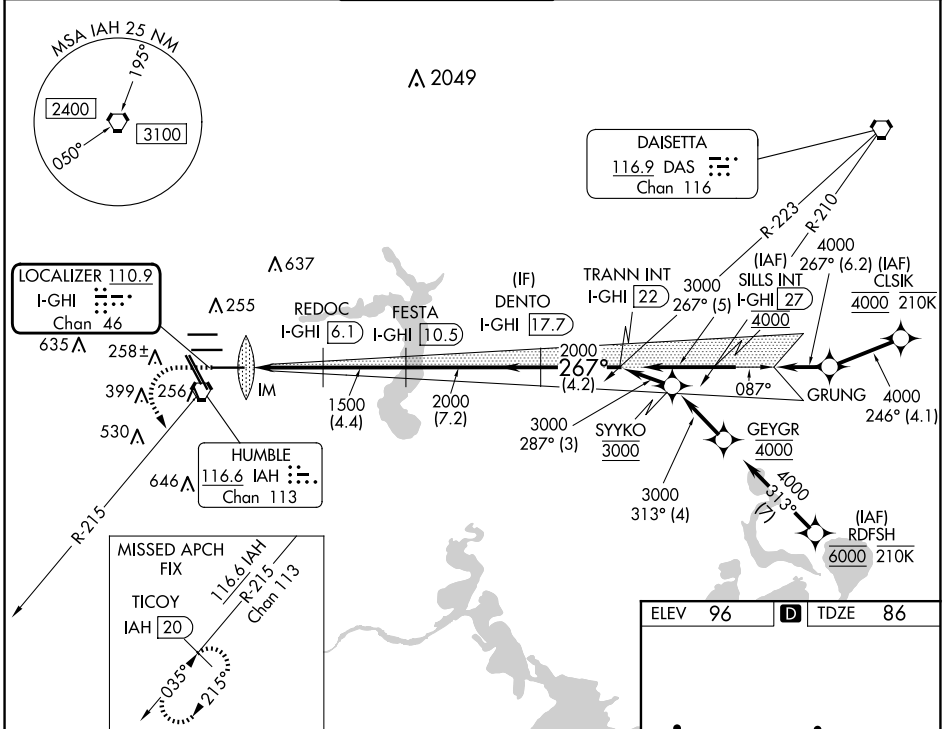
LOC/DME I-GHI 110.9 Chan 46	APP CRS 267°	Rwy Idg 10000 TDZE 86 Apt Elev 96
---	------------------------	--

ILS RWY 27 (SA CAT I)

GEORGE BUSH INTCNTL/HOUSTON (IAH)

RNAV 1-GPS or RADAR required for procedure entry. DME required.	ALSIF-2 	MISSED APPROACH: Climb to 560 then climbing left turn to 3000 on IAH VORTAC R-215 to TICOY/IAH 20 DME and hold.
Simultaneous approach authorized. Use of FD or AP required during simultaneous operations. Requires specific OPSPEC, MSPEC, or LOA approval and use of HUD to DH.		

D-ATIS 124.05	HOUSTON APP CON 120.05 379.1 EAST 124.35 316.15 WEST	HOUSTON TOWER 135.15 290.2	GND CON 118.575	CLNC DEL 128.1	CPDLC
-------------------------	--	--------------------------------------	---------------------------	--------------------------	-------



CATEGORY	A	B	C	D
S-ILS 27	RA 157/14 150 DA 236			
SA CATEGORY I ILS - SPECIAL AIRCREW & AIRCRAFT CERTIFICATION REQUIRED				

TDZ/CL Rwws 8R, 8L, 15R, 26R, 26L, 27 and 33L
HIRL all Rwws

SC-5, 15 MAY 2025 to 12 JUN 2025

SC-5, 15 MAY 2025 to 12 JUN 2025