

SC-5, 15 MAY 2025 to 12 JUN 2025

ARRIVAL ROUTE DESCRIPTION

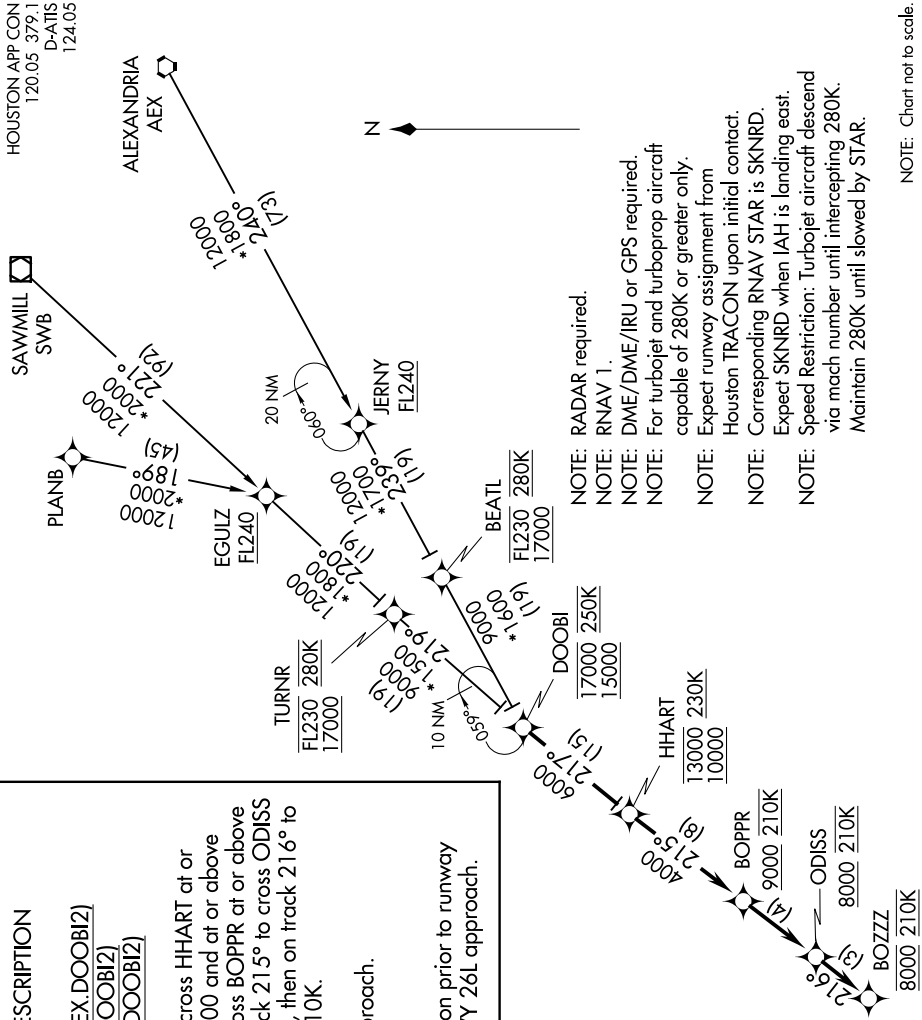
- ALEXANDRIA TRANSITION (AEX.DOOBI2)
- PLANB TRANSITION (PLANB.DOOBI2)
- SAWMILL TRANSITION (SWB.DOOBI2)

From DOOBI on track 217° to cross HHART at or above 10000, at or below 13000 and at or above 230K, then on track 215° to cross BOPPR at or above 9000 and at 210K, then on track 215° to cross ODISS at or above 8000 and at 210K, then on track 216° to cross BOZZZ at 8000 and at 210K.

Expect assigned instrument approach.

LOST COMMUNICATIONS

In the event of lost communication prior to runway assignment, execute the ILS RWY 26L approach.



- NOTE: RADAR required.
- NOTE: RNAV 1.
- NOTE: DME/DME/IRU or GPS required.
- NOTE: For turbojet and turboprop aircraft capable of 280K or greater only.
- NOTE: Expect runway assignment from Houston TRACON upon initial contact.
- NOTE: Corresponding RNAV STAR is SKNRD.
- NOTE: Expect SKNRD when IAH is landing east.
- NOTE: Speed Restriction: Turbojet aircraft descend via mach number until intercepting 280K. Maintain 280K until slowed by STAR.

SC-5, 15 MAY 2025 to 12 JUN 2025