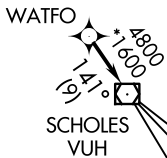
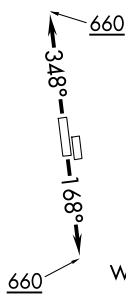


# WATFO SIX DEPARTURE (RNAV)

RNAV 1 - DME/DME/IRU or GPS.  
RADAR required.

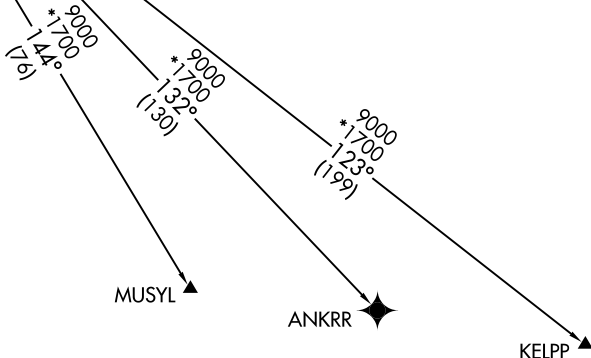
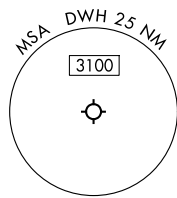
**TOP ALTITUDE:  
ASSIGNED BY ATC**

- ATIS 128.375
- CLNC DEL 119.45
- GND CON 121.8 239.0
- HOOKS TOWER \* 127.4 354.1 (EAST)
- 118.4 (CTAF) 354.1 (WEST)
- HOUSTON DEP CON 119.7 281.4 (Rwys 35L/R)
- 123.8 257.7 (Rwys 17L/R)



### TAKEOFF MINIMUMS

Rwys 17L, 35R: NA - Environmental.  
 Waterways 17, 35: NA - Air traffic.  
 Rwys 17R, 35L: Standard with minimum climb of 500'/NM to 660.



NOTE: Chart not to scale.

### DEPARTURE ROUTE DESCRIPTION

TAKEOFF RUNWAY 17R: Climb on heading 168° to 660, for RADAR vectors to WATFO, thence. . . .

TAKEOFF RUNWAY 35L: Climb on heading 348° to 660, for RADAR vectors to WATFO, thence. . . .

. . . on track 141° to VUH VOR/DME, then on (transition). Maintain ATC assigned altitude. Expect filed altitude 10 minutes after departure.

ANKRR TRANSITION (WATFO6.ANKRR)

KELPP TRANSITION (WATFO6.KELPP)

MUSYL TRANSITION (WATFO6.MUSYL)

SC-5, 15 MAY 2025 to 12 JUN 2025

SC-5, 15 MAY 2025 to 12 JUN 2025