

WAAS CH <b>41063</b> <b>W17A</b>	APP CRS <b>168°</b>	Rwy Idg TDZE <b>152</b> Apt Elev <b>152</b>	<b>6002</b>
--	------------------------	---	-------------

# RNAV (GPS) RWY 17R

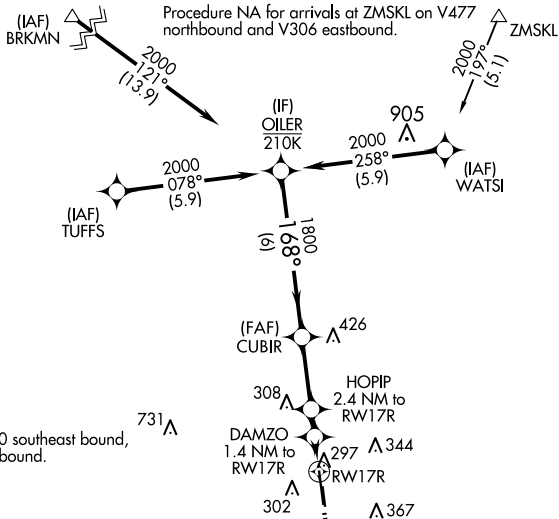
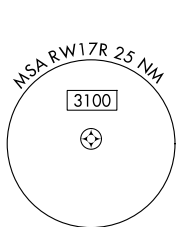
DAVID WAYNE HOOKS MEML (DWH)

RNP APCH-GPS.

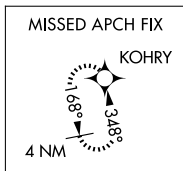
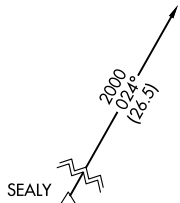
Baro-VNAV NA when using George Bush Intcnl/Houston altimeter setting. For uncompensated Baro-VNAV systems, procedure NA below -2°C or above 54°C. Rwy 17R helicopter visibility reduction below 3/4 SM NA. When local altimeter setting not received, use George Bush Intcnl/Houston altimeter setting: Increase all DAs 36 feet and visibilities 1/2 SM; increase all MDAs 40 feet. When control tower closed, LPV visibility 1 SM.

MISSED APPROACH:  
Climb to 2000 direct  
KOHRY and hold.

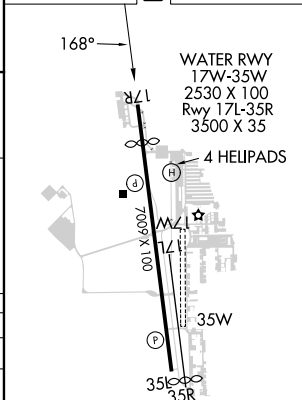
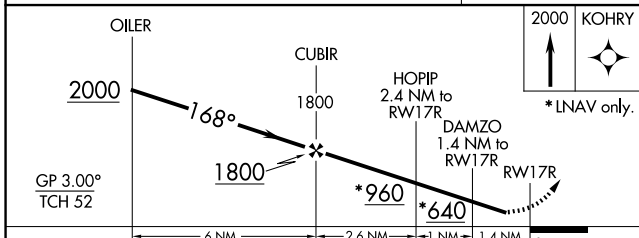
ATIS <b>128.375</b>	HOUSTON APP CON <b>119.7 281.4</b>	HOOKS TOWER* <b>127.4 354.1 EAST</b> <b>118.4 (CTAF) 0 354.1 WEST</b>	GND CON <b>121.8 239.0</b>	CLNC DEL <b>119.45</b>	UNICOM <b>122.95</b>
------------------------	---------------------------------------	---	-------------------------------	---------------------------	-------------------------



Procedure NA for arrivals at SEALY on T200 southeast bound, V222 westbound and T200-220 northwest bound.



ELEV 152	TDZE 152
----------	----------



CATEGORY	A	B	C	D
LPV DA	402-3/4		250 (300-3/4)	
LNAV/VNAV DA	508-1 1/8		356 (400-1 1/8)	
LNAV MDA	600-1	448 (500-1)	600-1 3/8	448 (500-1 3/8)
CIRCLING	640-1 488 (500-1)	660-1 508 (600-1)	680-1 1/2 528 (600-1 1/2)	780-2 628 (700-2)

REIL Rwy 17R and 35L  
HIRL Rwy 17R-35L

SC-5, 15 MAY 2025 to 12 JUN 2025

SC-5, 15 MAY 2025 to 12 JUN 2025