

# PALACIOS THREE DEPARTURE

SC-5, 15 MAY 2025 to 12 JUN 2025

RADAR and DME required.

TOP ALTITUDE:  
ASSIGNED BY ATC

**TAKEOFF MINIMUMS**  
 Rwy 17L, 35R: NA - Environmental.  
 Waterways 17, 35: NA - Air Traffic.  
 Rwy 17R, 35L: Standard.

ATIS 128.375  
 CLNC DEL 119.45  
 GND CON 121.8 239.0  
 HOOKS TOWER\* 127.4 354.1 (EAST)  
 118.4 (CTAF) 354.1 (WEST)  
 HOUSTON DEP CON 119.7 281.4 (Rwys 35L/R)  
 123.8 257.7 (Rwys 17L/R)

FORT STOCKTON  
 116.9 FST  
 Chan 116

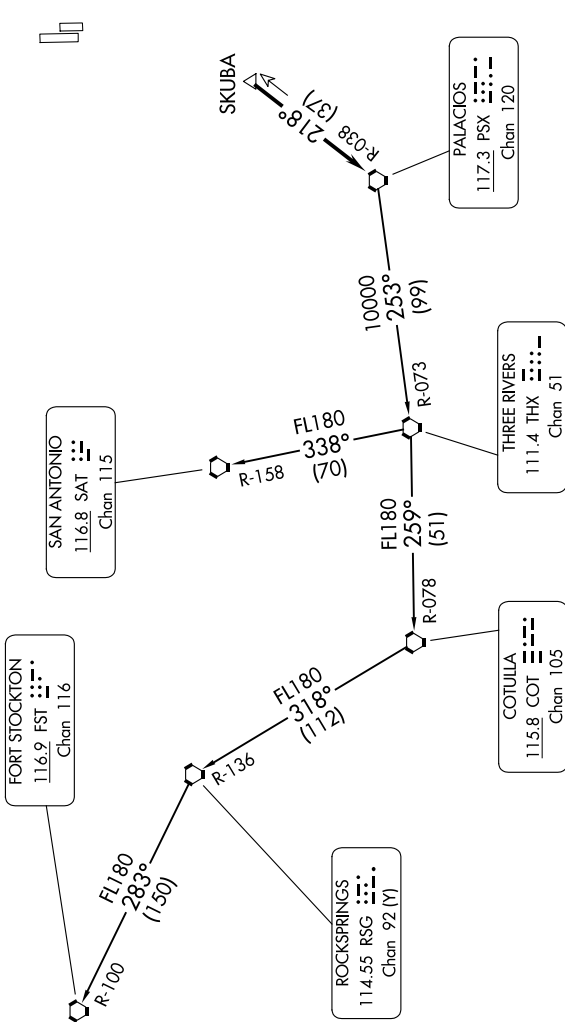
SAN ANTONIO  
 116.8 SAT  
 Chan 115

ROCKSPRINGS  
 114.55 RSG  
 Chan 92 (Y)

COTUILA  
 115.8 COT  
 Chan 105

THREE RIVERS  
 111.4 THX  
 Chan 51

PALACIOS  
 117.3 PSX  
 Chan 120



(CONTINUED ON FOLLOWING PAGE)

NOTE: Chart not to scale.

SC-5, 15 MAY 2025 to 12 JUN 2025

# PALACIOS THREE DEPARTURE