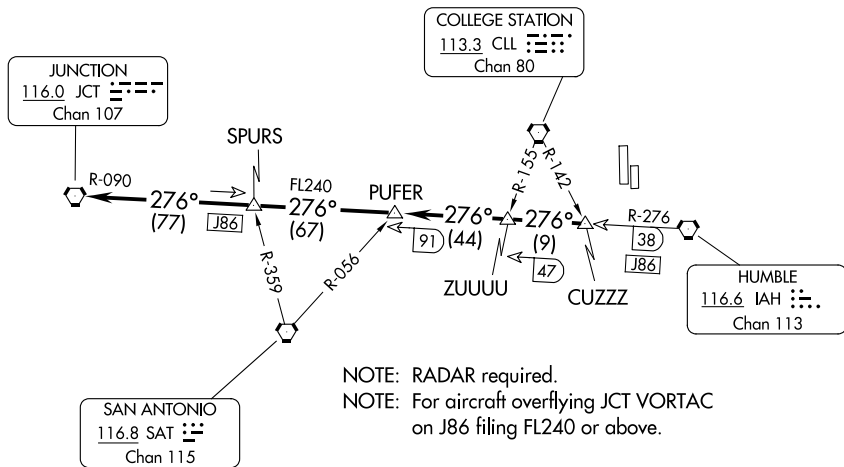


JUNCTION ONE DEPARTURE

ATIS
128.375
CLNC DEL
119.45
HOUSTON DEP CON
123.8 257.7 (Rwys 17L/R)
119.7 281.4 (Rwys 35L/R)
GND CON
121.8 239.0
HOOKS TOWER★
127.4 354.1 (EAST)
118.4 (CTAF) 354.1 (WEST)

TOP ALTITUDE:
ASSIGNED BY ATC



NOTE: RADAR required.
NOTE: For aircraft overflying JCT VORTAC on J86 filing FL240 or above.

TAKEOFF MINIMUMS

Rwys 17R, 35L: Standard.
Rwys 17L, 35R: NA - Environmental.
Waterway 17, 35: NA - Air Traffic.

NOTE: Chart not to scale.



DEPARTURE ROUTE DESCRIPTION

TAKEOFF ALL RUNWAYS: When entering controlled airspace, climb on assigned heading for RADAR vectors to CUZZZ INT. Maintain ATC assigned altitude. Expect filed altitude 10 minutes after departure, thence. . . .

. . . .on IAH R-276 and JCT R-090 to JCT VORTAC.