

APP CRS	Rwy Idg	4440
146°	TDZE	721
	Apt Elev	742

RNAV (GPS) RWY 15

KENOSHA RGNL (ENW)

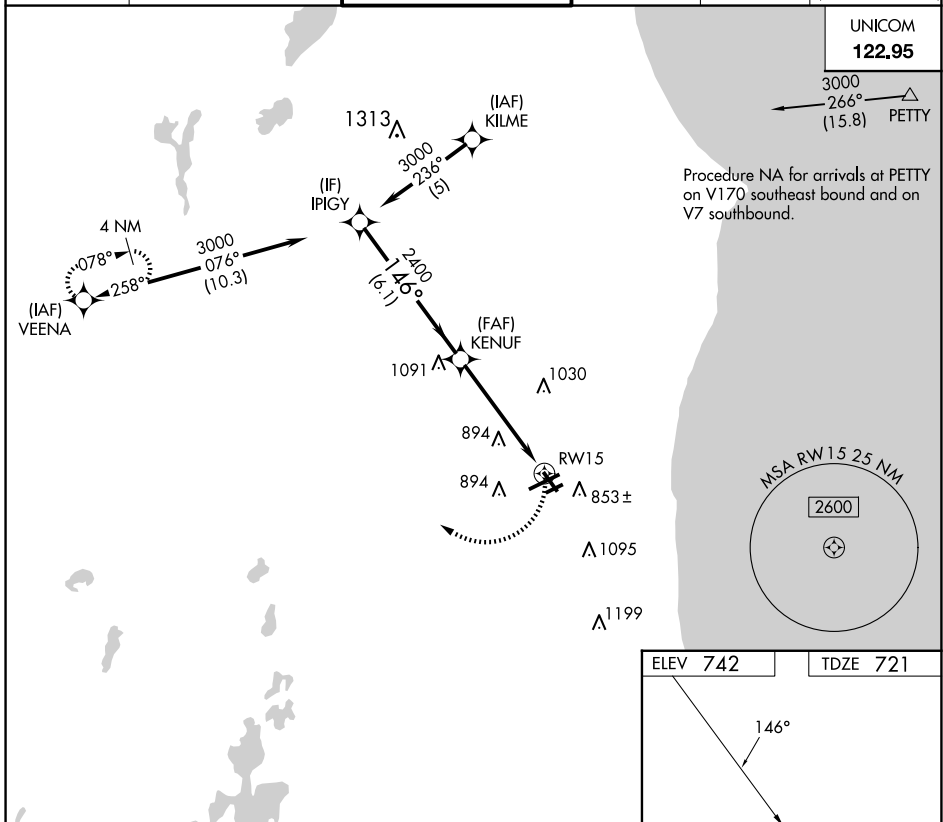
RNP APCH.

▼ Rwy 15 helicopter visibility reduction below 1 SM NA. Straight-In and Circling Rwy 15 NA at night, Circling Rwy 7R NA at night.

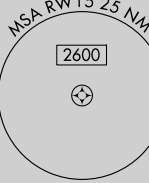
MISSED APPROACH:
Climbing right turn to 3000
direct VEENA and hold.

ATIS 127.175	MILWAUKEE APP CON 135.875 317.725	KENOSHA TOWER * 118.6 (CTAF) 0 353.6	GND CON 121.875	CLNC DEL 121.875	CLNC DEL 118.6 (When twr closed)
------------------------	---	--	---------------------------	----------------------------	---

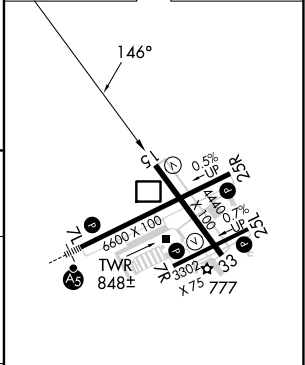
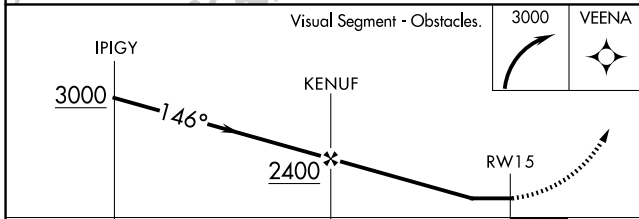
UNICOM
122.95



Procedure NA for arrivals at PETTY on V170 southeast bound and on V7 southbound.



ELEV 742	TDZE 721
----------	----------



CATEGORY	A	B	C	D
LNVA MDA	1200-1	479 (500-1)	1200-1 $\frac{3}{8}$ 479 (500-1 $\frac{3}{8}$)	1200-1 $\frac{1}{2}$ 479 (500-1 $\frac{1}{2}$)
CIRCLING	1200-1 458 (500-1)	1340-1 598 (600-1)	1400-1 $\frac{3}{4}$ 658 (700-1 $\frac{3}{4}$)	1440-2 $\frac{1}{4}$ 698 (700-2 $\frac{1}{4}$)

MIRL Rwy 7R-25L **0**
HIRL Rwy 7L-25R and 15-33 **0**
REIL Rwy 25R **0**

EC-3, 15 MAY 2025 to 12 JUN 2025

EC-3, 15 MAY 2025 to 12 JUN 2025