

WAAS CH 63230 W17A	APP CRS 173°	Rwy Idg TDZE Apt Elev	5501 592 592
--	------------------------	-----------------------------	---

RNAV (GPS) RWY 17

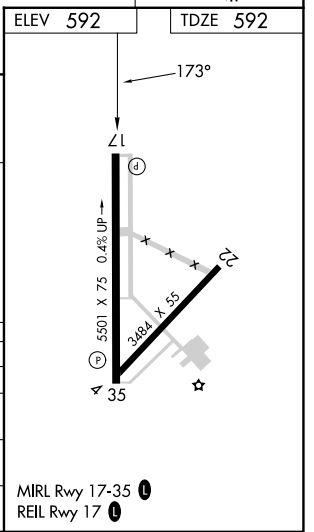
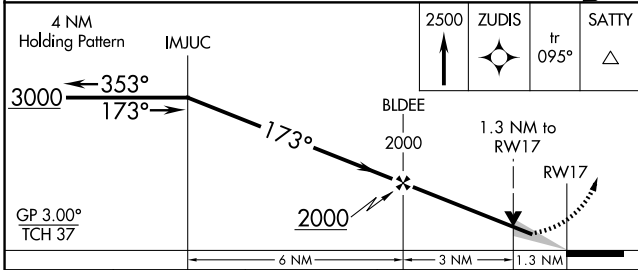
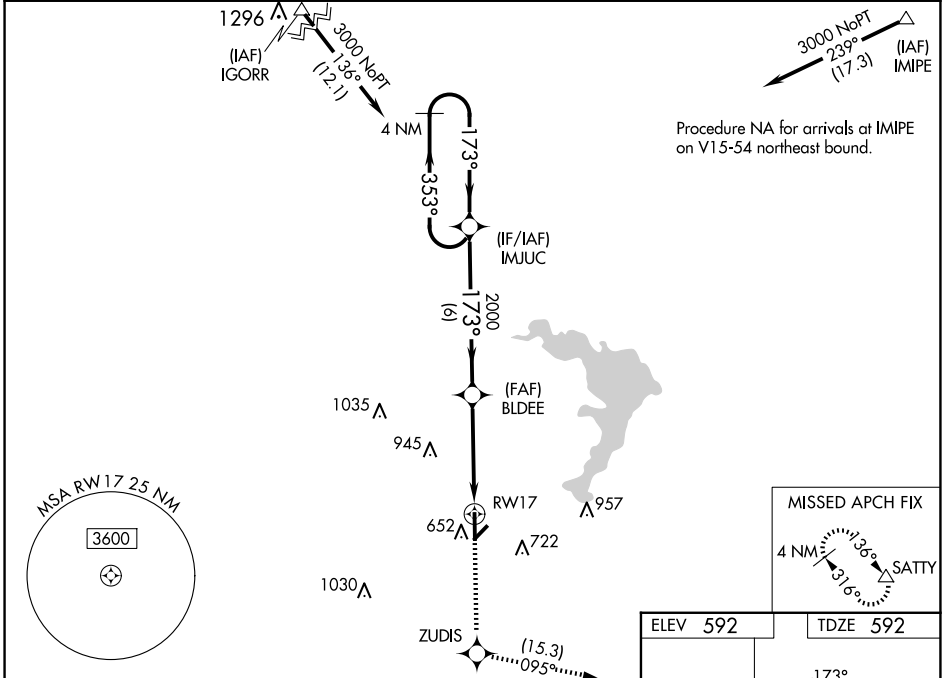
MC GREGOR EXEC (PWG)

RNP APCH - GPS.

ASR Baro-VNAV NA when using Waco Rgnl altimeter setting. For uncompensated Baro-VNAV systems, LNAV/VNAV NA below -20°C or above 54°C. When local altimeter setting not received, use Waco Rgnl altimeter setting and increase LPV DA to 873 feet and all visibilities 1/8 SM; increase LNAV/VNAV DA to 873 feet and all visibilities 1/8 SM; increase all MDAs 40 feet and Circling visibility Cat C 1/4 SM.

MISSED APPROACH:
Climb to 2500 direct ZUDIS and on track 095° to SATTY and hold.

AWOS-3PT 135.525	WACO APP CON ★ 127.65 352.0	GCO 121.725	UNICOM 123.05 (CTAF) 0
----------------------------	---------------------------------------	-----------------------	---



CATEGORY	A	B	C	D
LPV DA	842-3/4	250 (300-3/4)		NA
LNAV/VNAV DA	842-3/4	250 (300-3/4)		NA
LNAV MDA	1040-1	448 (500-1)	1040-1 3/8 448 (500-1 3/8)	NA
CIRCLING	1040-1 448 (500-1)	1060-1 468 (500-1)	1300-2 708 (800-2)	NA

SC-3, 15 MAY 2025 to 12 JUN 2025

SC-3, 15 MAY 2025 to 12 JUN 2025