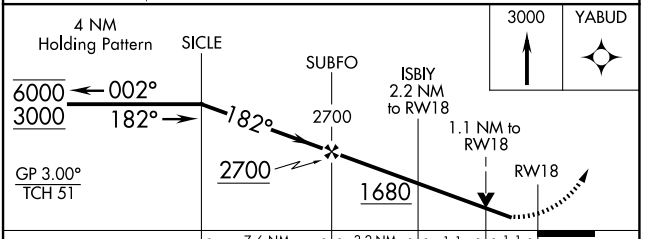
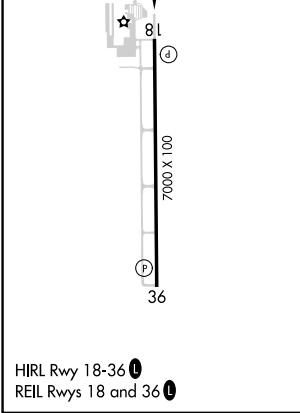
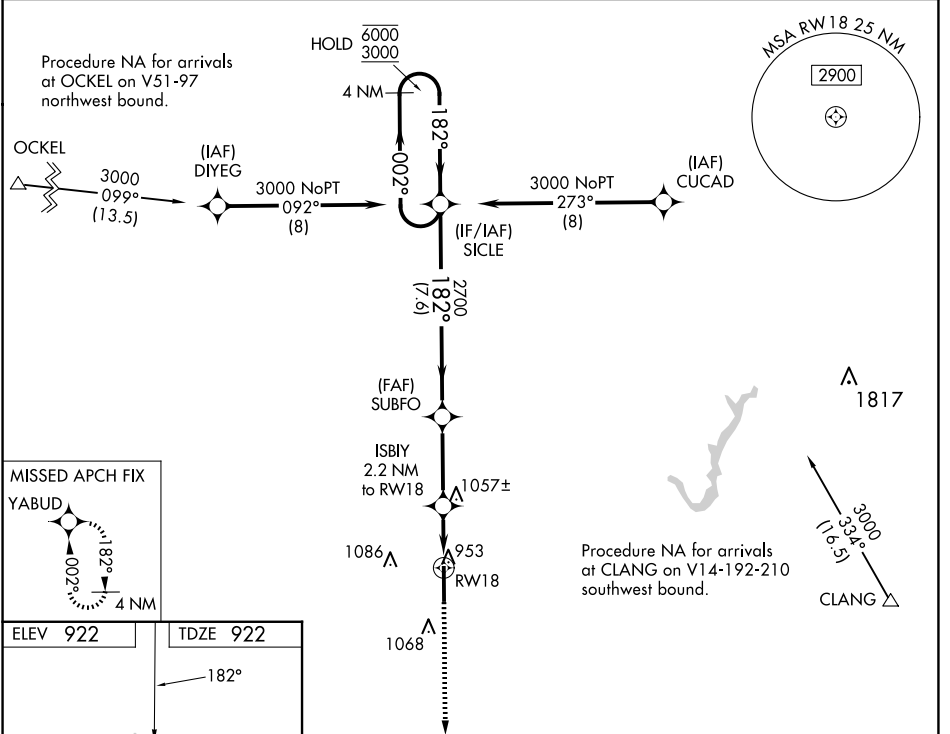


APP CRS 182°	Rwy Idg TDZE Apt Elev	7000 922 922
------------------------	-----------------------------	---

RNAV (GPS) RWY 18

INDIANAPOLIS EXEC (TYQ)

RNP APCH - GPS.		<p>⚠ Rwy 18 helicopter visibility reduction below $\frac{3}{4}$ SM NA. For uncompensated Baro-VNAV systems, LNAV/VNAV NA below -16°C or above 54°C.</p> <p>MISSED APPROACH: Climb to 3000 direct YABUD and hold.</p>	
AWOS-3PT 120.725	INDIANAPOLIS APP CON 124.65 127.15 317.8	CLNC DEL 118.175	UNICOM 123.05 (CTAF)



CATEGORY	A	B	C	D
LNAV/VNAV DA	1216-7/8 294 (300-7/8)			
LNAV MDA	1320-1	398 (400-1)	1320-1 1/8	398 (400-1 1/8)
C CIRCLING	1380-1	458 (500-1)	1440-1 1/2	1480-2
			518 (600-1 1/2)	558 (600-2)

EC-2, 15 MAY 2025 to 12 JUN 2025

EC-2, 15 MAY 2025 to 12 JUN 2025