

APP CRS	Rwy Idg	3798
183°	TDZE	585
	Apt Elev	585

RNAV (GPS) RWY 18

JAMES CLEMENTS MUNI (3CM)

RNP APCH - GPS.

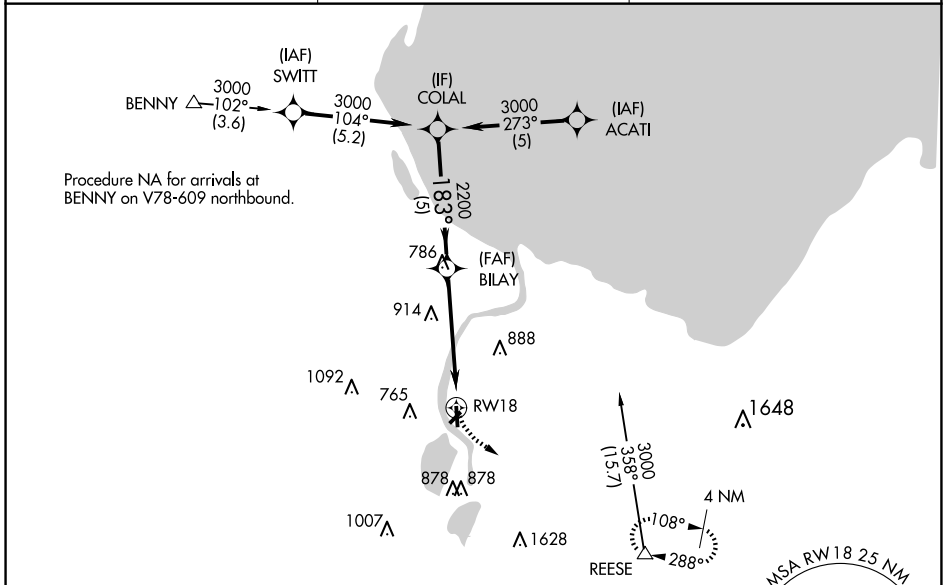
▽ Circling NA to Rwys 18W, 36W, 13W, 31W, 9W and 27W.
△ Circling NA southeast of Rwys 23 and 36. Rwy 18 helicopter visibility reduction below 1 SM NA. Use Saginaw County H W Browne altimeter setting. Procedure NA at night.

MISSED APPROACH: Climbing left turn to 3000 direct REESE and hold.

HYX AWOS-3PT
118.325

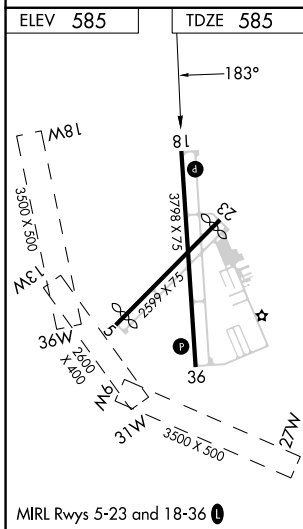
GREAT LAKES APP CON ★
120.95 235.625

UNICOM
122.725 (CTAF) 0



EC-1, 15 MAY 2025 to 12 JUN 2025

EC-1, 15 MAY 2025 to 12 JUN 2025



	COLAL	BILAY	RW18	REESE
	3000	2200		3000
	183°		2.96°	
	5 NM		5 NM	
CATEGORY	A	B	C	D
LNAV MDA	1260-1	675 (700-1)	1260-2 675 (700-2)	NA
CIRCLING	1260-1	675 (700-1)	1260-2 675 (700-2)	NA

VGSI and descent angles not coincident (VGSI Angle 4.00/TCH 27).