

LURIC EIGHT DEPARTURE (RNAV)

CLNC DEL
125.6
CTAF
122.7
HOUSTON DEP CON
134.45 284.0

TOP ALTITUDE: ASSIGNED BY ATC

NOTE: RADAR required.
NOTE: DME/DME/IRU or GPS required.
NOTE: RNAV 1.

TAKEOFF MINIMUMS

Rwys 5, 12, 23, 30:

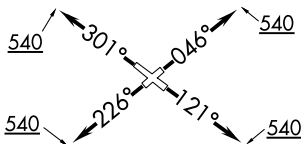
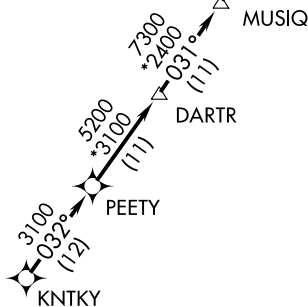
Standard with minimum climb of 500' per NM to 540.

DEPARTURE ROUTE DESCRIPTION

- TAKEOFF RUNWAY 5:** Climb on heading 046° to 540 for RADAR vectors to KNTKY, thence . . .
- TAKEOFF RUNWAY 12:** Climb on heading 121° to 540 for RADAR vectors to KNTKY, thence . . .
- TAKEOFF RUNWAY 23:** Climb on heading 226° to 540 for RADAR vectors to KNTKY, thence . . .
- TAKEOFF RUNWAY 30:** Climb on heading 301° to 540 for RADAR vectors to KNTKY, thence . . .

. . . on track 032° to PEETY, then on track 032° to DARTR, then on track 031° to MUSIQ, then on track 031° to CLAVN, then on track 031° to VELCO, then on track 031° to ENJOY, then on track 031° to LURIC, then on (transition). Maintain ATC assigned altitude. Expect filed altitude 10 minutes after departure.

HAWES TRANSITION (LURIC8.HAWES)
ORRTH TRANSITION (LURIC8.ORRTH)



NOTE: Chart not to scale.