

KARR SEVEN DEPARTURE (RNAV)

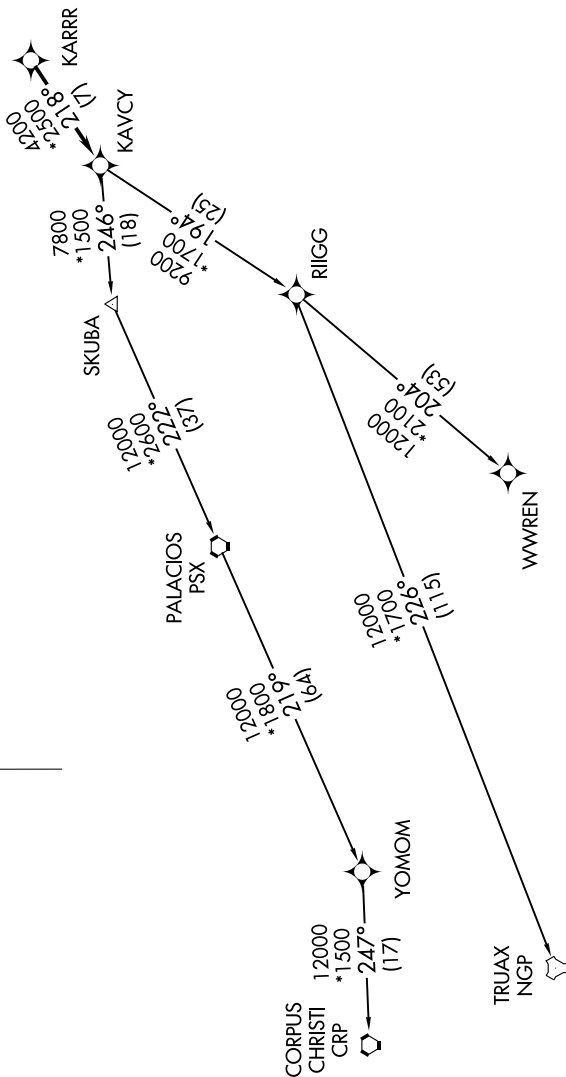
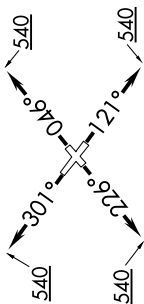
SC-5, 15 MAY 2025 to 12 JUN 2025

RNAV-1 DME/DME/IRU or GPS.
RADAR required.

TOP ALTITUDE:
ASSIGNED BY ATC

CTAF 122.7
CLNC DEL 125.6
HOUSTON DEP CON 134.45 284.0

TAKEOFF MINIMUMS
Rwys 5, 12, 23, 30:
Standard with minimum climb of 500' per NM to 540.



(NARRATIVE ON FOLLOWING PAGE)

NOTE: Chart not to scale.

SC-5, 15 MAY 2025 to 12 JUN 2025