

WAAS CH <b>97321</b> <b>W01A</b>	APP CRS <b>010°</b>	Rwy Idg TDZE Apt Elev	<b>5101</b> <b>626</b> <b>638</b>
--	------------------------	-----------------------------	---

# RNAV (GPS) RWY 1L

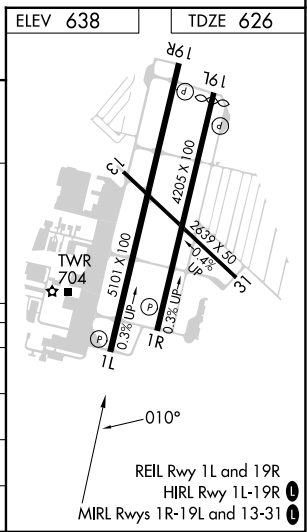
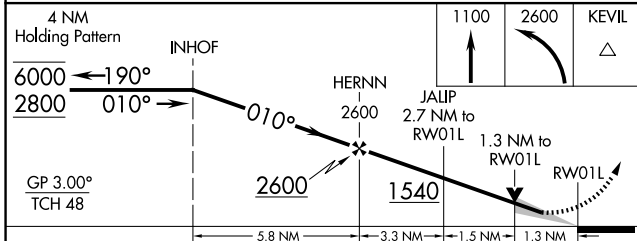
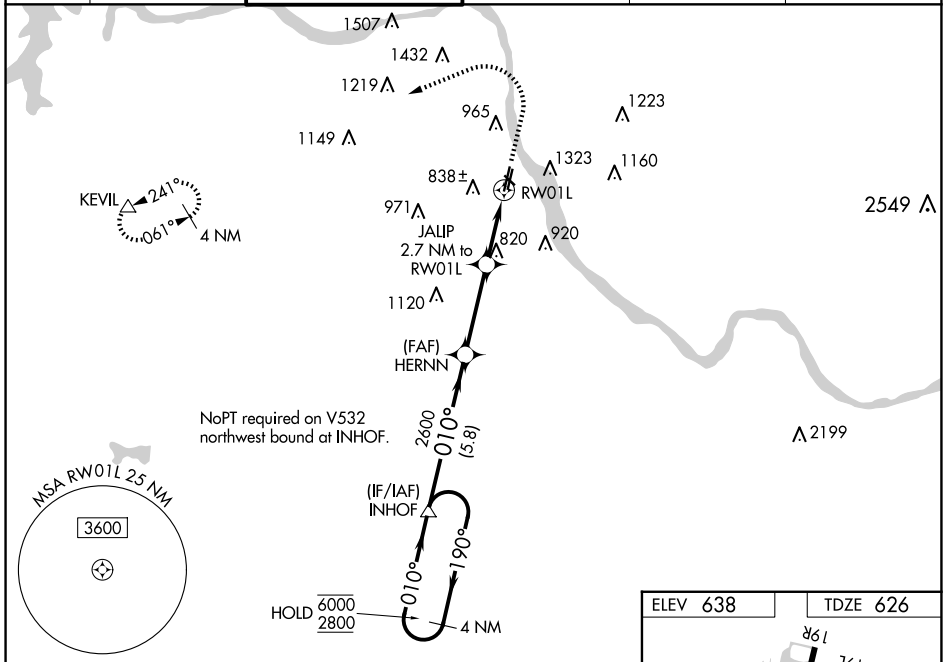
TULSA RIVERSIDE (RVS)

RNP APCH - GPS.

**⚠** Circling NA northeast of Rwy 31 and 19L. For uncompensated Baro-VNAV systems, LNAV/VNAV NA below -16°C or above 54°C. Baro-VNAV and VDP NA when using TUL altimeter setting. When local altimeter setting not received, use TUL altimeter setting; increase LPV DA to 871 feet; increase LNAV/VNAV DA to 1152 feet and all visibilities 1/8 SM. Increase all MDAs 40 feet and Circling visibility Cat C 1/4 SM.

MISSED APPROACH: Climb to 1100 then climbing left turn to 2600 direct KEVIL and hold.

ATIS <b>126.5</b>	TULSA APP CON <b>134.7</b>	RIVERSIDE TOWER★ <b>120.3</b> (CTAF) <b>0</b>	GND CON <b>121.7</b>	CLNC DEL <b>124.5</b>	UNICOM <b>122.95</b>
----------------------	-------------------------------	--	-------------------------	--------------------------	-------------------------



CATEGORY	A	B	C	D
LPV DA		845-3/4	219 (300-3/4)	
LNAV/VNAV DA		1126-1 3/8	500 (500-1 3/8)	
LNAV MDA	1080-1	454 (500-1)	1080-1 3/8	454 (500-1 3/8)
<b>C</b> CIRCLING	1260-1 622 (700-1)	1280-1 642 (700-1)	1280-1 3/4 642 (700-1 3/4)	1380-2 1/2 742 (800-2 1/2)

SC-1, 15 MAY 2025 to 12 JUN 2025

SC-1, 15 MAY 2025 to 12 JUN 2025