

VOR/DME AEL	APP CRS	Rwy Idg	<b>5000</b>
<b>109.8</b>	<b>342°</b>	TDZE	<b>1261</b>
Chan <b>35</b>		Apt Elev	<b>1261</b>

# VOR RWY 35

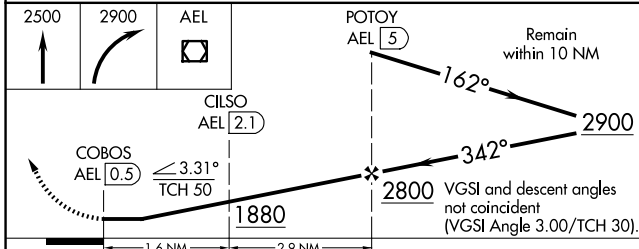
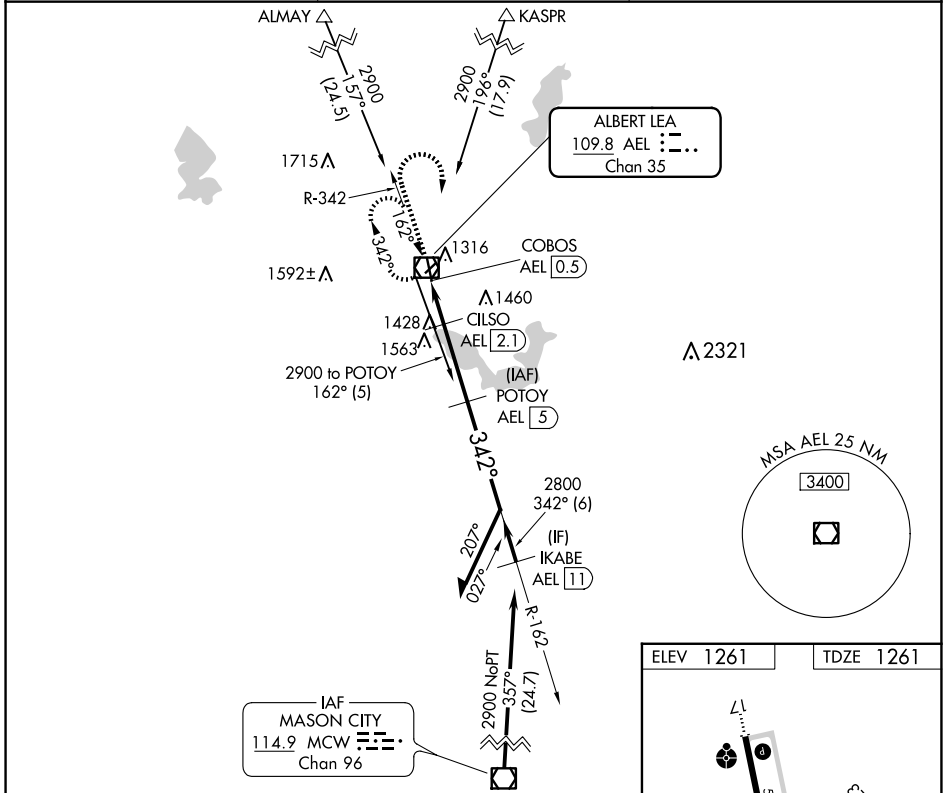
ALBERT LEA MUNI (AEL)

DME required.

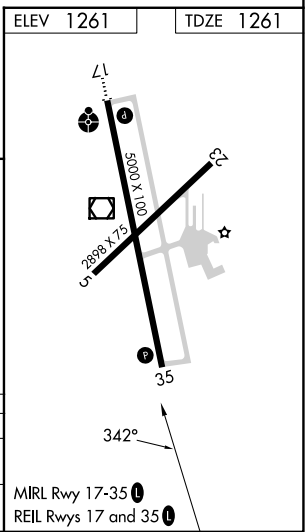
**▼** Circling Rwy 5, 23 NA at night.  
**▲** Rwy 35 helicopter visibility reduction below 3/4 SM NA.

MISSED APPROACH: Climb to 2500 then climbing right turn to 2900 direct AEL VOR/DME and hold.

AWOS-3PT <b>119.575</b>	ROCHESTER APP CON * <b>119.8 251.125</b>	UNICOM <b>123.0 (CTAF) 0</b>
----------------------------	---	---------------------------------



CATEGORY	A	B	C	D
S-35	1740-1 479 (500-1)		1740-1 3/8 479 (500-1 3/8)	
CIRCLING	1780-1 519 (600-1)		1920-1 3/4 659 (700-1 3/4)	2040-2 1/2 779 (800-2 1/2)



NC-1, 15 MAY 2025 to 12 JUN 2025

NC-1, 15 MAY 2025 to 12 JUN 2025