

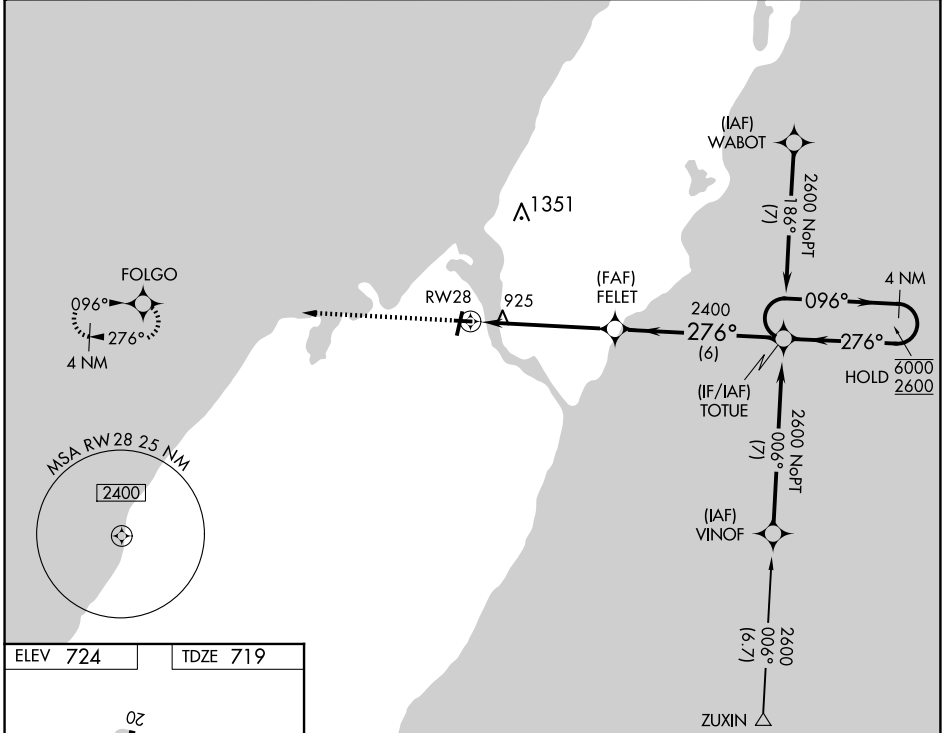
APP CRS	Rwy Idg	3199
276°	TDZE	719
	Apt Elev	724

RNAV (GPS) RWY 28

DOOR COUNTY CHERRYLAND (SUE)

RNP APCH - GPS.	MISSED APPROACH: Climb to 2600 direct FOLGO and hold.
Rwy 28 helicopter visibility reduction below 3/4 SM NA.	

AWOS-3PT 128.325	GREEN BAY APP CON ★ 119.25 338.2	UNICOM 122.7 (CTAF)
----------------------------	--	-------------------------------

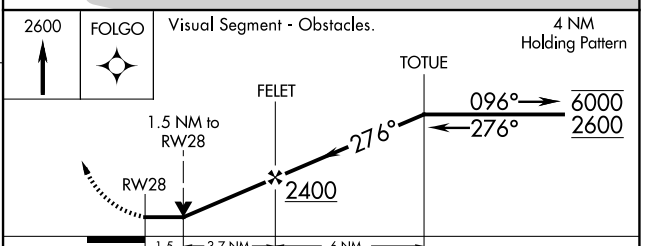


EC-3, 15 MAY 2025 to 12 JUN 2025

EC-3, 15 MAY 2025 to 12 JUN 2025

ELEV 724	TDZE 719
----------	----------

RLLS Rwy 2
 REIL Rwys 2, 10, 20 and 28
 MIRL Rwys 2-20 and 10-28



CATEGORY	A	B	C	D
LNAV MDA	1240-1	521 (600-1)	1240-1½ 521 (600-1½)	NA
CIRCLING	1280-1	556 (600-1)	1280-1½ 556 (600-1½)	NA