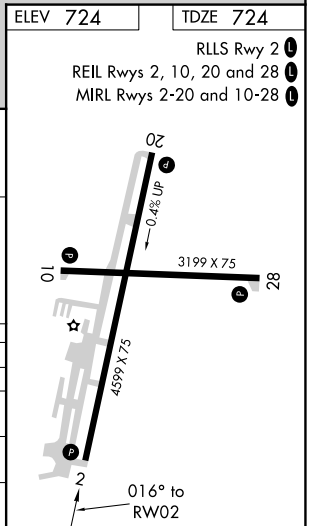
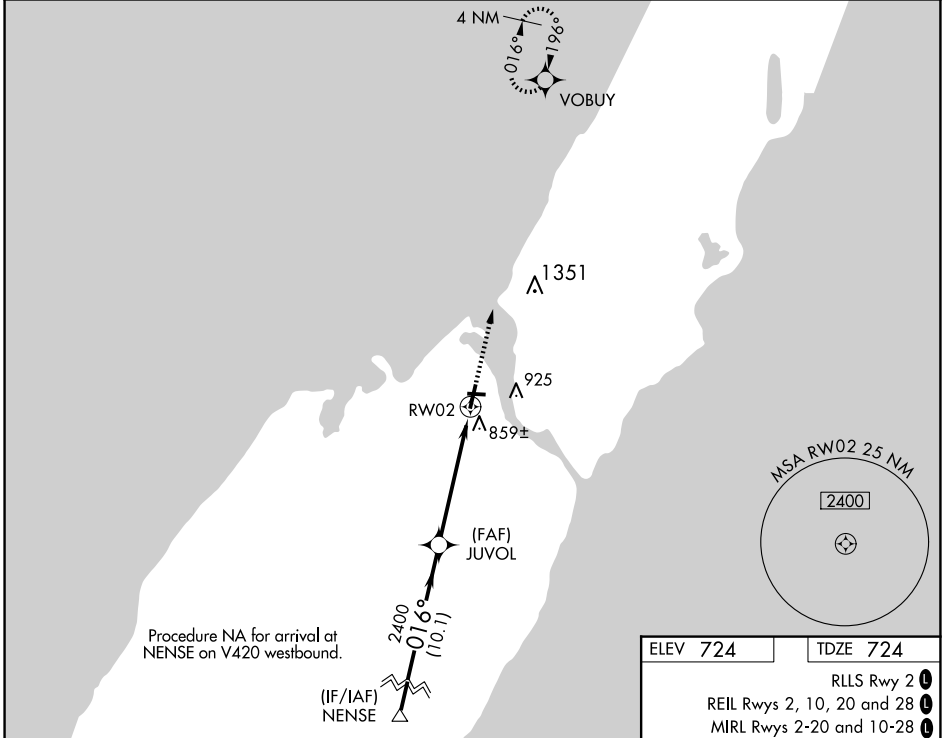


|  |                        |                 |             |
|--|------------------------|-----------------|-------------|
| WAAS<br>CH <b>81904</b><br><b>W02A</b> | APP CRS<br><b>016°</b> | Rwy Idg<br>4599 | TDZE<br>724 |
|  |                        | Apt Elev<br>724 |             |

# RNAV (GPS) RWY 2

DOOR COUNTY CHERRYLAND (SUE)

|  |  |   |
|--|--|---|
| RNP APCH.  |  | MISSED APPROACH:<br>Climb to 2600 direct<br>VOBUY and hold. |
| ▼ Rwy 2 helicopter visibility reduction below 3/4 SM NA. For uncompensated Baro-VNAV systems,<br>▲ LNAV/VNAV NA below -16°C or above 54°C. |  |   |
| AWOS-3PT<br><b>128.325</b>   | GREEN BAY APP CON *<br><b>119.25 338.2</b> | UNICOM<br><b>122.7(CTAF) 0</b>                              |



|              |   |             |                  |              |
|--------------|---|-------------|------------------|--------------|
|              | VGSi and RNAV glidepath angles not coincident (VGSi Angle 3.00/TCH 34). |             | 2600             | VOBUY        |
|              | NENSE   |             | JUVOL            | RWY 2        |
|              | 3500  |             | 2400             |              |
|              | 016°  |             | *1.1 NM to RWY 2 | *LNAV only.  |
|              | GP 3.00° TCH 40   |             | 2400             |              |
|              | 10.1 NM   |             | 4 NM             | 1.1 NM       |
| CATEGORY     | A   | B           | C                | D            |
| LPV DA       | 1013-1  |             | 289 (300-1)      |              |
| LNAV/VNAV DA | 1164-1½   |             | 440 (500-1½)     |              |
| LNAV MDA     | 1120-1  | 396 (400-1) | 1120-1⅛          | 396 (400-1⅛) |
| CIRCLING     | 1280-1  | 556 (600-1) | 1280-1½          | 1340-2       |
|              |   |             | 556 (600-1½)     | 616 (700-2)  |