

LOC/DME I-BPK 111.95 Chan 56(Y)	APP CRS 049°	Rwy Idg TDZE 928 Apt Elev 928
--	------------------------	---

ILS or LOC RWY 5

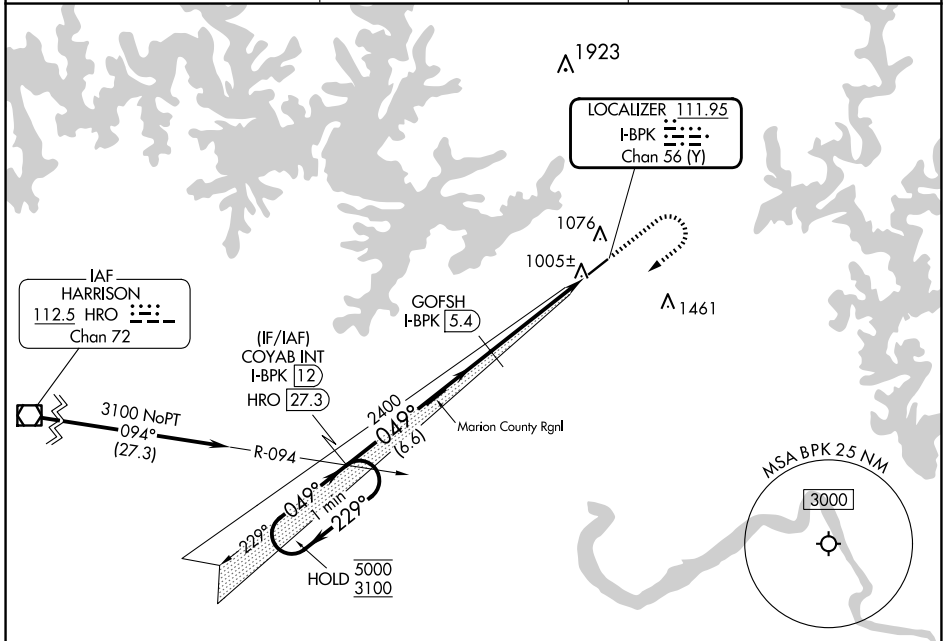
BAXTER COUNTY (BPK)

DME required for LOC only.

⚠ Circling NA for Cat C, southeast of Rwy 5-23. Procedure NA at night.
⚠ Rwy 5 helicopter visibility reduction below 1 SM NA.

MISSED APPROACH: Climb to 2000, then climbing right turn to 3100 on heading 230° and HRO R-094 to COYAB INT/I-BPK 12 DME and hold.

ASOS 133.975	MEMPHIS CENTER 126.85 281.55	UNICOM 123.0 (CTAF) 0
------------------------	--	--



SC-1, 15 MAY 2025 to 12 JUN 2025

SC-1, 15 MAY 2025 to 12 JUN 2025

ELEV 928		TDZE 928	
VGSI and ILS glidepath not coincident (VGSI Angle 3.00/TCH 38). One Minute Holding Pattern COYAB INT I-BPK 12 HRO 27.3 GOFSH I-BPK 5.4 I-BPK 0.9 hdg 230° GS 3.00° TCH 44 5000 ← 229° → 3100 2400 2400 6.6 NM 4.5 NM			
CATEGORY	A	B	D
S-ILS 5	1178-1 250 (300-1)		NA
S-LOC 5	1260-1 332 (400-1)		NA
C CIRCLING	1400-1 472 (500-1)	1460-1½ 532 (600-1½)	

5000 x 75
0.5% UP
049°

REIL Rwy 5 and 23 **0**
MIRL Rwy 5-23 **0**