

APP CRS	Rwy Idg	<b>5342</b>
<b>094°</b>	TDZE	<b>379</b>
	Apt Elev	<b>388</b>

# RNAV (GPS) RWY 9L

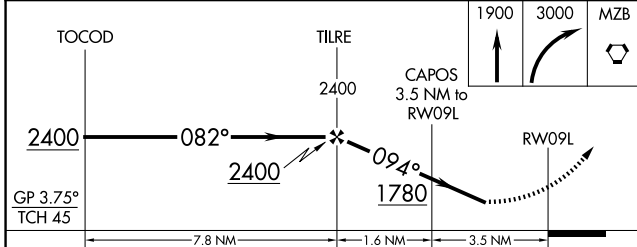
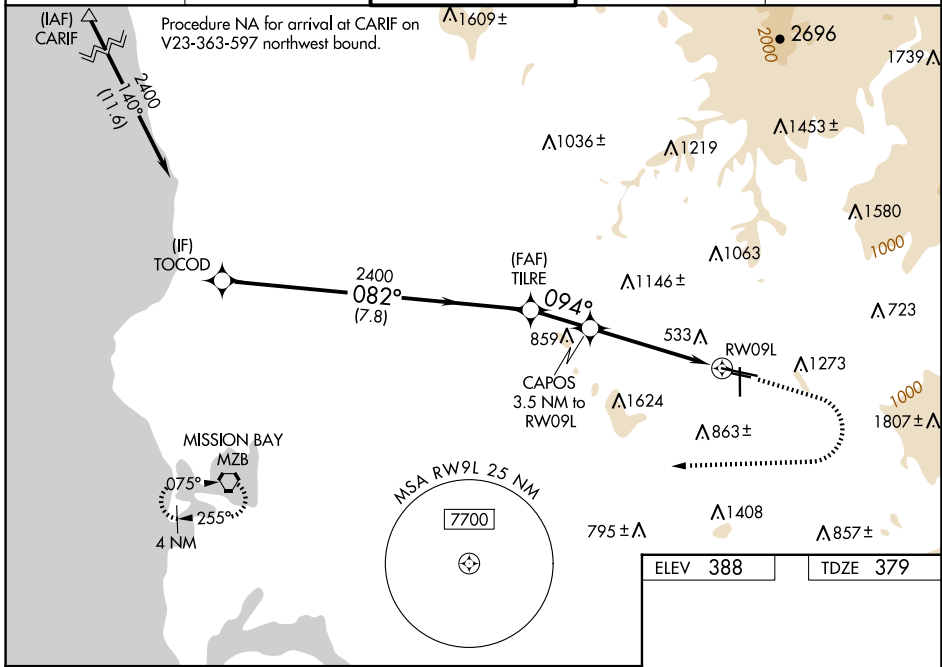
GILLESPIE FLD (SEE)

RNP APCH - GPS.

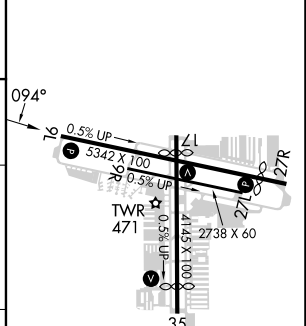
**⚠** Rwy 9L helicopter visibility reduction below 1 SM NA. Circling NA northeast of Rwys 17 and 27R. For uncompensated Baro-VNAV systems, LNAV/VNAV NA below -15° or above 54°C. Circling Rwy 9L, 27L/R, 35 NA at night. Rwy 9L Straight-in minimums NA at night. When local altimeter setting not received, use NKX altimeter setting and increase LNAV/VNAV DA to 1306 feet. Increase all MDAs 40 feet.

MISSED APPROACH: (Do not exceed 180K until MZB) Climb to 1900 then climbing right turn to 3000 direct MZB VORTAC and hold.

ATIS <b>125.45</b>	SOCAL APP CON <b>124.35 279.625</b>	GILLESPIE TOWER* <b>120.7 (CTAF) 257.8</b>	GND CON <b>121.7</b>	CLNC DEL <b>125.1</b>
-----------------------	--	---	-------------------------	--------------------------



ELEV	388	TDZE	379
------	-----	------	-----



CATEGORY	A	B	C	D
LNAV/VNAV DA	1272-2½ 893 (900-2½)			NA
LNAV MDA	1480-1¼ 1101 (1100-1¼)	1480-1½ 1101 (1100-1½)	1480-3 1101 (1100-3)	NA
<b>C</b> CIRCLING	1480-1¼ 1092 (1100-1¼)	1480-1½ 1092 (1100-1½)	1940-3 1552 (1600-3)	NA

MIRL Rws 9L-27R and 17-35 **⚠**  
REIL Rwy 27R **⚠**

SW-3, 15 MAY 2025 to 12 JUN 2025

SW-3, 15 MAY 2025 to 12 JUN 2025