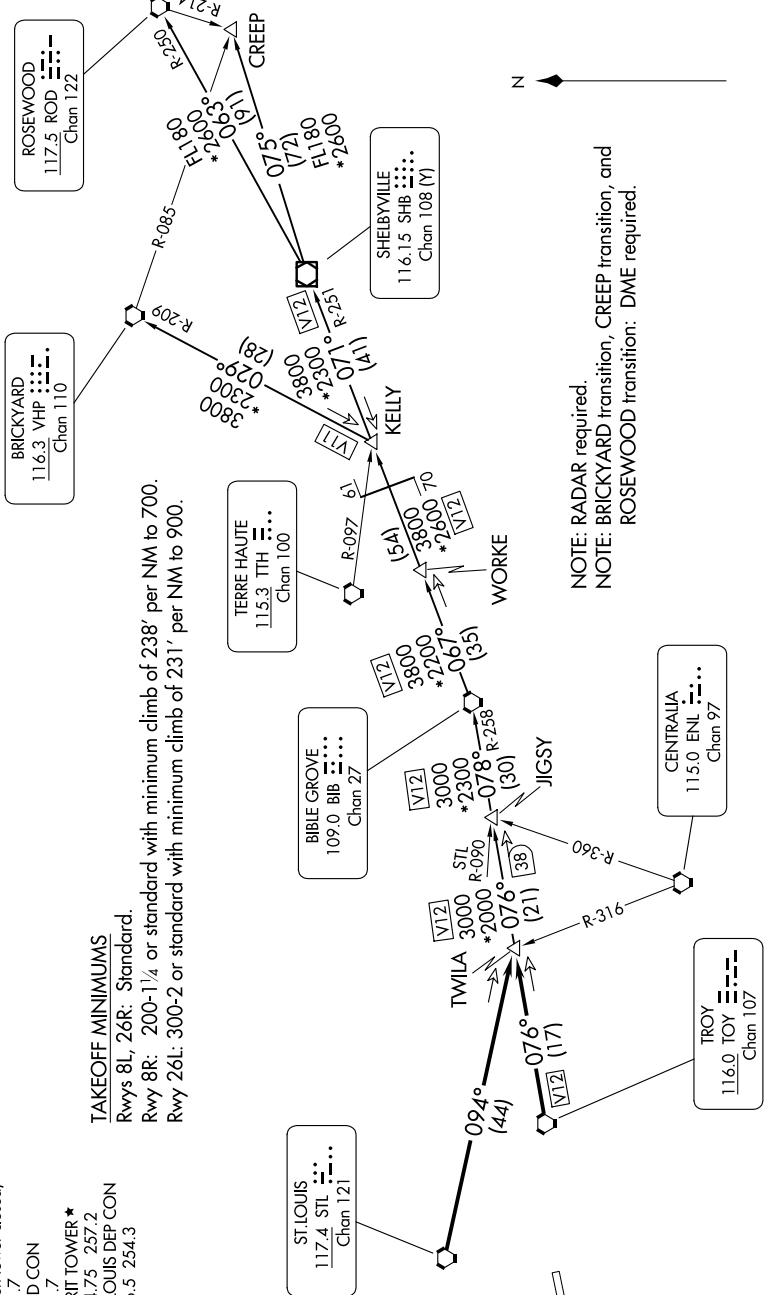


NC-3, 15 MAY 2025 to 12 JUN 2025

ATIS 134.8
CLNC DEL 133.1
ST LOUIS CLNC DEL (when tower closed) 121.7
GND CON 121.7
SPIRIT TOWER * 124.75 257.2
ST LOUIS DEP CON 126.5 254.3

GATEWAY ONE DEPARTURE
(GATWY1.TWILA) 08NOV18

TOP ALTITUDE:
(JETS) 3000/
(PROPS) 2500



TAKEOFF MINIMUMS

Rwys 8L, 26R: Standard.

Rwy 8R: 200-1/4 or standard with minimum climb of 238' per NM to 700.

Rwy 26L: 300-2 or standard with minimum climb of 231' per NM to 900.

NOTE: RADAR required.
NOTE: BRICKYARD transition, CREEP transition, and ROSEWOOD transition: DME required.

NOTE: Chart not to scale.

(CONTINUED ON FOLLOWING PAGE)

NC-3, 15 MAY 2025 to 12 JUN 2025