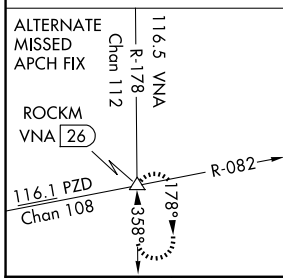
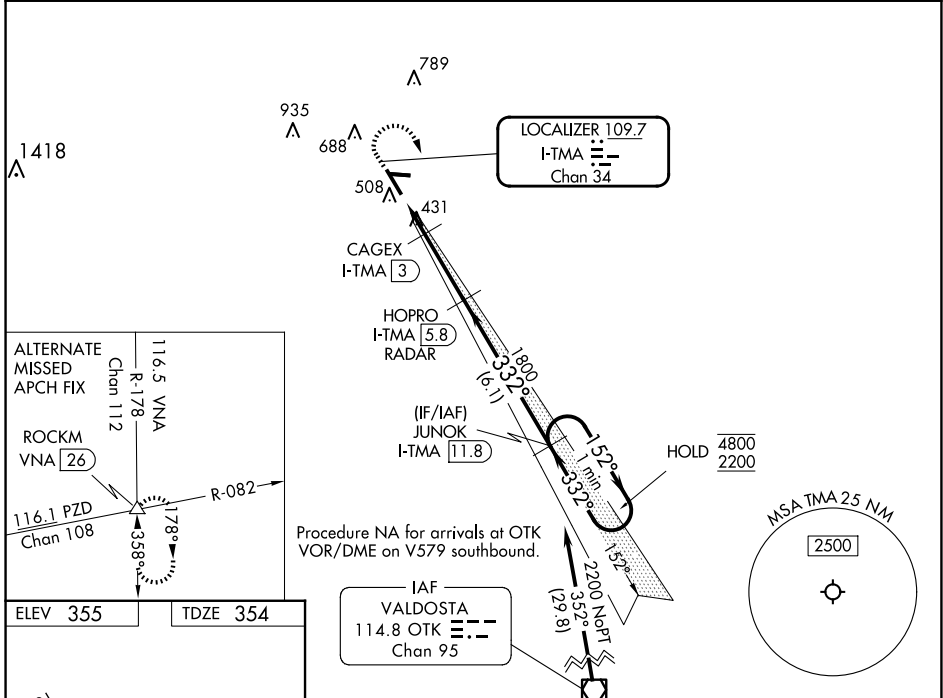


LOC/DME I-TMA 109.7 Chan 34	APP CRS 332°	Rwy Idg 6506 TDZE 354 Apt Elev 355
-------------------------------------------------	------------------------	---------------------------------------------------------------

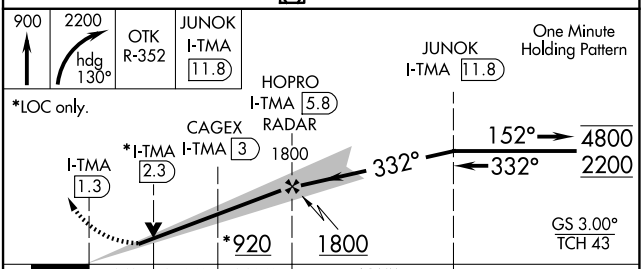
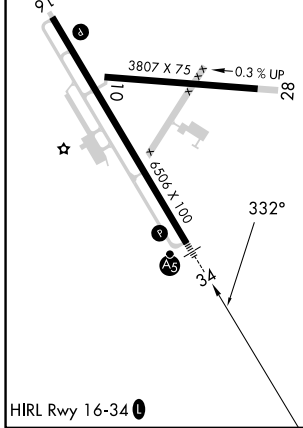
ILS or LOC RWY 34

HENRY TIFT MYERS (TMA)

DME required.	MALSR 	MISSED APPROACH: Climb to 900 then climbing right turn to 2200 on heading 130° and OTK VOR/DME R-352 to JUNOK/I-TMA 11.8 DME and hold.
AWOS-3PT 118.525	VALDOSTA APP CON ★ 126.6 285.6	UNICOM 122.7 (CTAF) 0



ELEV 355	TDZE 354
----------	----------



CATEGORY	A	B	C	D
S-ILS 34		623- ³ / ₄	269 (300- ³ / ₄)	
S-LOC 34		700- ³ / ₄	346 (400- ³ / ₄)	
CIRCLING	920-1 565 (600-1)	1060-1 705 (800-1)	1060-2 705 (800-2)	1240-3 885 (900-3)

SE-4, 15 MAY 2025 to 12 JUN 2025

SE-4, 15 MAY 2025 to 12 JUN 2025