

WAAS CH <b>93610</b> <b>W16A</b>	APP CRS <b>157°</b>	Rwy Idg <b>4742</b> TDZE <b>26</b> Apt Elev <b>32</b>
--	------------------------	---

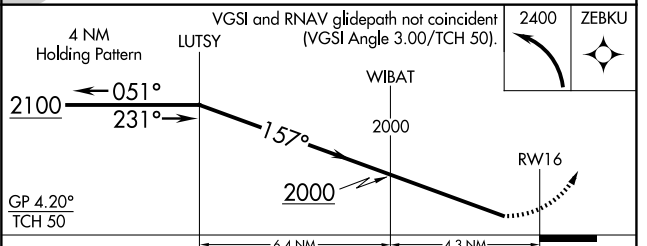
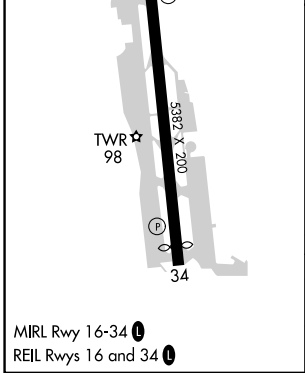
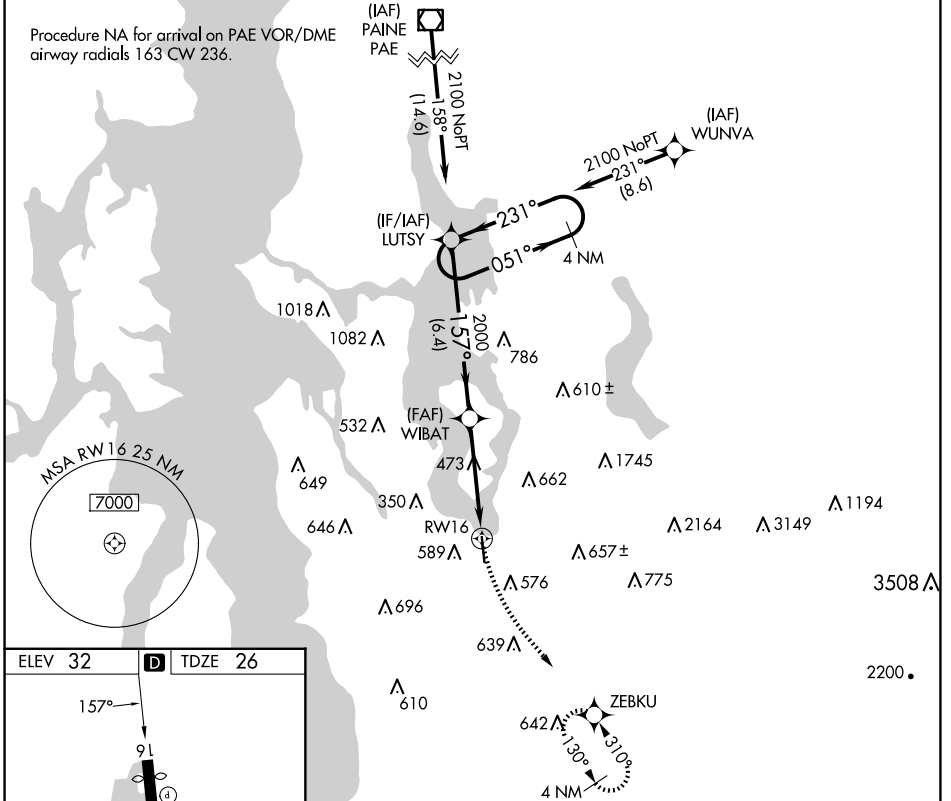
# RNAV (GPS) Z RWY 16

RENTON MUNI (RNT)

▼ For uncompensated Baro-VNAV systems, LNAV/VNAV NA below -5°C (23°F) or above 48°C (119°F). DME/DME RNP-0.3 NA. Rwy 16 helicopter visibility reduction below ¼ SM NA.

MISSED APPROACH: Climbing left turn to 2400 direct ZEBKU and hold.

ATIS <b>126.95</b>	SEATTLE APP CON <b>123.9 338.2</b> (RWY 16) <b>125.9 306.9</b> (RWY 34)	RENTON TOWER* <b>124.7</b> (CTAF) <b>0 256.9</b>	GND CON <b>121.6 256.9</b>	UNICOM <b>122.95</b>
-----------------------	---	---	-------------------------------	-------------------------



CATEGORY	A	B	C	D
LPV DA	526-1 <sup>3</sup> / <sub>8</sub>	500 (500-1 <sup>3</sup> / <sub>8</sub> )		NA
LNAV/VNAV DA	668-1 <sup>7</sup> / <sub>8</sub>	642 (700-1 <sup>7</sup> / <sub>8</sub> )		NA

NW-1, 15 MAY 2025 to 12 JUN 2025

NW-1, 15 MAY 2025 to 12 JUN 2025