

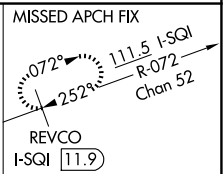
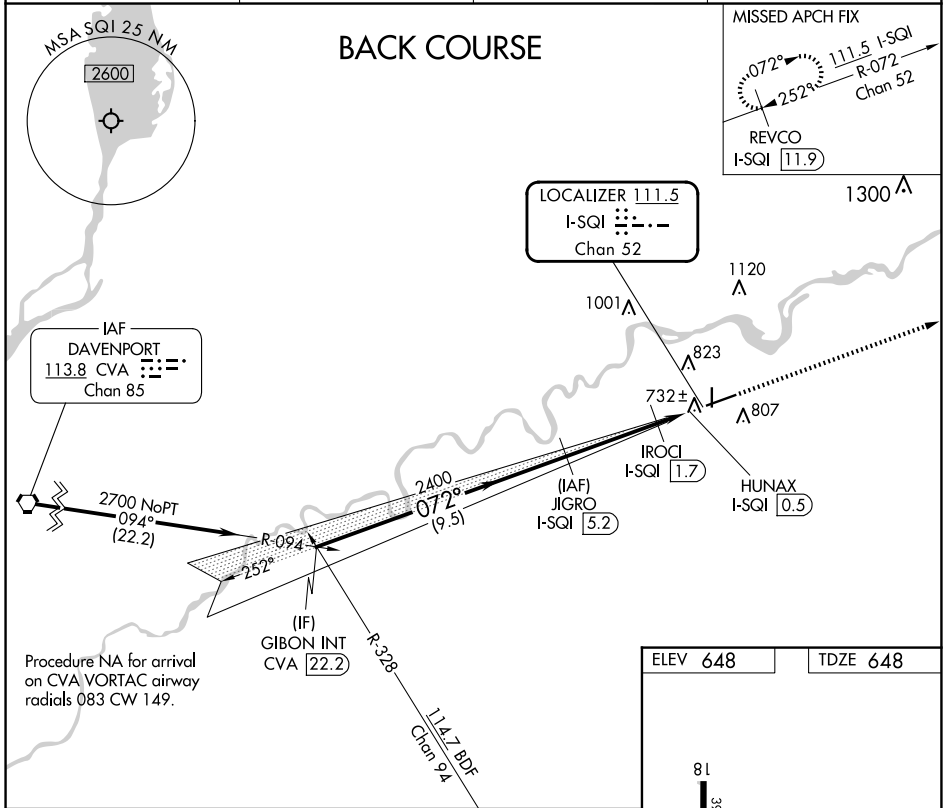
LOC/DME I-SQI 111.5 Chan 52	APP CRS 072°	Rwy ldg 6499 TDZE 648 Apt Elev 648
---	------------------------	---

LOC BC RWY 7

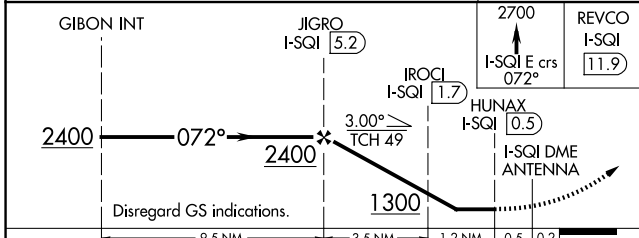
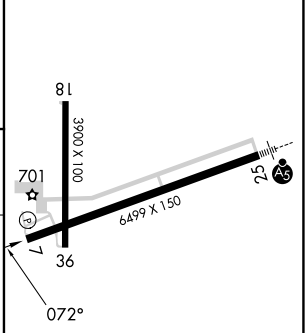
WHITESIDE COUNTY/JOS H BITTORF FLD (SQI)

DME required.	MISSED APPROACH: Climb to 2700 on I-SQI localizer east course 072° to REVCO/I-SQI 11.9 DME and hold.
<p>▼ Rwy 7 helicopter visibility reduction below 3/4 SM NA.</p> <p>▲ NA</p>	

AWOS-3PT 119.175	ROCKFORD APP CON 126.0 327.0	CLNC DEL 128.0	UNICOM 123.0 (CTAF) 0
----------------------------	--	--------------------------	---------------------------------



ELEV 648	TDZE 648
----------	----------



CATEGORY	A	B	C	D
S-LOC 7	1000-1 352 (400-1)			
CIRCLING	1140-1 492 (500-1)	1160-1½ 512 (600-1½)	1480-2¾ 832 (900-2¾)	



EC-3, 15 MAY 2025 to 12 JUN 2025

EC-3, 15 MAY 2025 to 12 JUN 2025