

WAAS CH 65807 W31A	APP CRS 313°	Rwy Idg 3498 TDZE 827 Apt Elev 827
--	------------------------	---

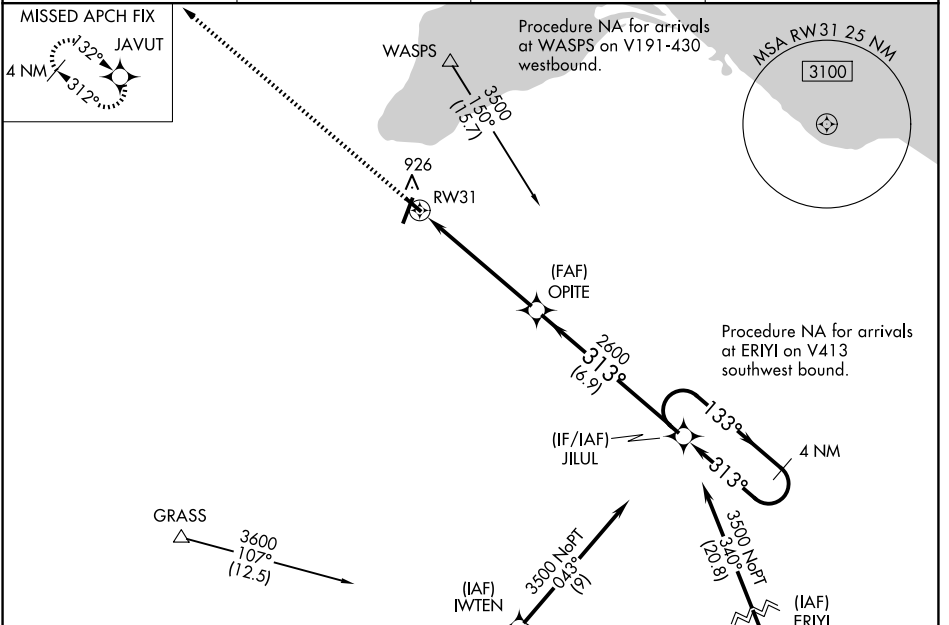
RNAV (GPS) RWY 31

JOHN F KENNEDY MEML (ASX)

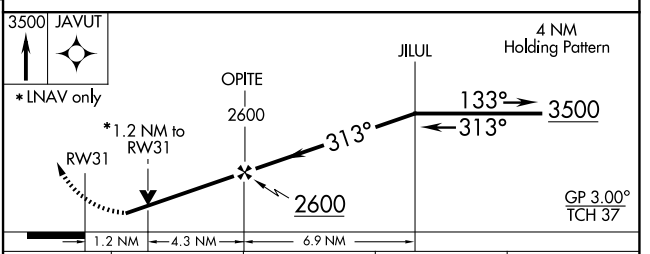
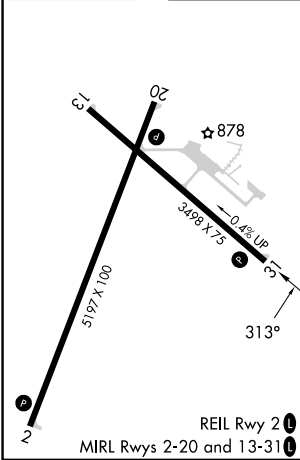
⚠ For uncompensated Baro-VNAV systems, LNAV/VNAV NA below -28°C (-18°F) or above 54°C (130°F). DME/DME RNP-0.3 NA. Helicopter visibility reduction below 3/4 SM NA. Baro-VNAV and VDP NA when using Ironwood altimeter setting. When local altimeter setting not received, use Ironwood altimeter setting and increase all DAs 132 feet and all MDAs 140 feet; increase LPV all Cats and LNAV Cat C/D visibility 3/8 mile, LNAV/VNAV all Cats and Circling Cat C/D visibility 1/2 mile.

MISSED APPROACH: Climb to 3500 direct JAVUT and hold.

ASOS 126.775	MINNEAPOLIS CENTER 126.45 276.4	GCO 122.25	UNICOM 122.8 (CTAF) 0
------------------------	---	----------------------	---------------------------------



ELEV 827	TDZE 827
----------	----------



CATEGORY	A	B	C	D
LPV DA		1077-7/8	250 (300-7/8)	
LNAV/VNAV DA		1125-1	298 (300-1)	
LNAV MDA	1240-1	413 (500-1)	1240-1 1/4	413 (500-1 1/4)
C CIRCLING	1240-1 413 (500-1)	1280-1 453 (500-1)	1440-1 3/4 613 (700-1 3/4)	1560-2 1/4 733 (800-2 1/4)

EC-3, 15 MAY 2025 to 12 JUN 2025

EC-3, 15 MAY 2025 to 12 JUN 2025