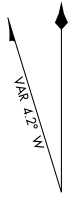


AWOS-3PT
 118.250
 CLNC DEL
 118.8
 CTAF/UNICOM
 122.8

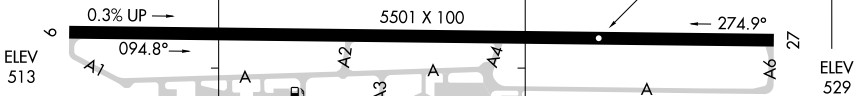
38°15.5' N



 11.2° W
 JANUARY 2025
 ANNUAL RATE OF CHANGE
 0.1° W

38°15.0' N

FIELD
 ELEV
 529



ELEV
 513

ELEV
 529

RWY 09-27
 S-29, D-50

38°14.5' N

86°57.5' W

86°57.0' W

86°56.5' W

EC-2, 15 MAY 2025 to 12 JUN 2025

EC-2, 15 MAY 2025 to 12 JUN 2025